

T 22S, R 13E, M W

A	2	3	4	5	6	7	8	9	10	11	12	13	14	15	16	17	18	19	20	21	22	23	24	25	
B	+	+	+	+	+	+	+	+	+	+	+	+	+	+	+	+	+	+	+	+	+	+	+	+	+
C	+	6	+	+	5	+	+	+	4	+	+	3	+	+	2	+	+	+	1	+	+	+	+	+	
D	+	+	+	+	+	+	+	+	+	+	+	+	+	+	+	+	+	+	+	+	+	+	+	+	
E	+	+	+	+	+	+	+	+	+	+	+	+	+	+	+	+	+	+	+	+	+	+	+	+	
F	+	+	+	+	+	+	+	+	+	+	+	+	+	+	+	+	+	+	+	+	+	+	+	+	
G	+	7	+	+	8	+	+	+	9	+	+	+	+	10	+	+	+	11	+	+	+	+	12	+	
H	+	+	+	+	+	+	+	+	+	+	+	+	+	+	+	+	+	+	+	+	+	+	+	+	
J	+	+	+	+	+	+	+	+	+	+	+	+	+	+	+	+	+	+	+	+	+	+	+	+	
K	+	+	+	+	+	+	+	+	+	+	+	+	+	+	+	+	+	+	+	+	+	+	+	+	
L	+	18	+	+	17	+	+	+	16	+	+	+	+	15	+	+	+	14	+	+	+	+	13	+	
M	+	+	+	+	+	+	+	+	+	+	+	+	+	+	+	+	+	+	+	+	+	+	+	+	
N	+	+	+	+	+	+	+	+	+	+	+	+	+	+	+	+	+	+	+	+	+	+	+	+	
O	+	+	+	+	+	+	+	+	+	+	+	+	+	+	+	+	+	+	+	+	+	+	+	+	
P	+	19	+	+	20	+	+	+	21	+	+	+	+	22	+	+	+	23	+	+	+	+	24	+	
Q	+	+	+	+	+	+	+	+	+	+	+	+	+	+	+	+	+	+	+	+	+	+	+	+	
R	+	+	+	+	+	+	+	+	+	+	+	+	+	+	+	+	+	+	+	+	+	+	+	+	
S	+	+	+	+	+	+	+	+	+	+	+	+	+	+	+	+	+	+	+	+	+	+	+	+	
T	+	30	+	+	29	+	+	+	28	+	+	+	+	27	+	+	+	26	+	+	+	+	25	+	
U	+	+	+	+	+	+	+	+	+	+	+	+	+	+	+	+	+	+	+	+	+	+	+	+	
V	+	+	+	+	+	+	+	+	+	+	+	+	+	+	+	+	+	+	+	+	+	+	+	+	
W	+	+	+	+	+	+	+	+	+	+	+	+	+	+	+	+	+	+	+	+	+	+	+	+	
X	+	31	+	+	32	+	+	+	33	+	+	+	+	34	+	+	+	35	+	+	+	+	+	+	
Y	+	+	+	+	+	+	+	+	+	+	+	+	+	+	+	+	+	+	+	+	+	+	+	+	

LEGEND

○ = Corner having information on form 7100-52 in this file.

*LEDGEND CONFORMS TO REPORTING FORM MPB 2/80*

FILING INSTRUCTION

File 7100-52 card record by letter and number coordinates behind the file guide for the township in which it falls.

File the 7100-52 card record by letter and then by number i.e., all A cards first, then B cards etc.

The first card behind the file guide (if data have been obtained and recorded) will be card A-1 for N.W. Township Corner, then card A-2 for 1/16 corner then card A-3 for 1/4 corner etc.

CORNER RECORD FILE GUIDE (Rectangular Surveys)

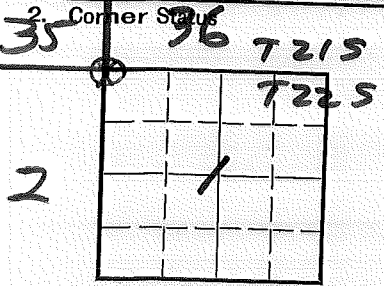
1 R13 R14 6 5 4 3 2 1 R13 R14

# LAND CORNER RECORD

(Rectangular)

1. T. 22S R. 13E No. A-21 Cor. Sec Mer. Wm. State Oregon N. F. Deschutes Dist. Fort Rock

**A-2** / 5680-2



3. Original Description \_\_\_\_\_ Vol. \_\_\_\_\_ Page \_\_\_\_\_ Where Recorded \_\_\_\_\_

4. Description of Corners: \_\_\_\_\_

5. Investigation Notes: See Z-21 T21S R13E Wm.

Sec. line marker 700 Ft. South  
9/15 M.L.C.

3875  
8/19/62

7. Photo Identification

Photo No. \_\_\_\_\_

Ident. By: \_\_\_\_\_

8. Plane Coordinate Position Data

State \_\_\_\_\_ Zone \_\_\_\_\_

X \_\_\_\_\_

Y \_\_\_\_\_

Estab. By \_\_\_\_\_

Field Book No. \_\_\_\_\_

Where Filed \_\_\_\_\_

9. Evaluation

Authentic \_\_\_\_\_

Needs Verif. \_\_\_\_\_ Monument No. \_\_\_\_\_

Re-estab.  Survey \_\_\_\_\_

Land Status F.S.

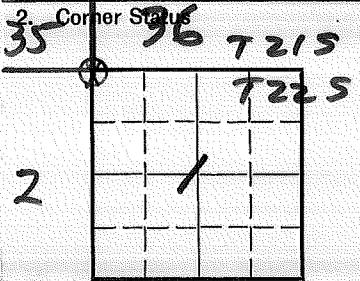
6. Signed D.M. Miller Title \_\_\_\_\_ Date \_\_\_\_\_

LAND CORNER RECORD

(Rectangular)

A-2/5680-2

1. T. P2S R. 13E No. A-21 Cor. Sec Mer. Wm. State Oregon N. F. Deschutes Dist. Fort Rock



3. Original Description \_\_\_\_\_ Vol. \_\_\_\_\_ Page \_\_\_\_\_ Where Recorded \_\_\_\_\_

4. Description of Corners:

5. Investigation Notes: See Z-21 T21S R13E Wm.  
 Sec line marker 700 Ft. South  
 9/15 M.L.C.

3 FT S  
 1962

7. Photo Identification  
 Photo No. \_\_\_\_\_  
 Ident. By: \_\_\_\_\_

8. Plane Coordinate Position Data  
 State \_\_\_\_\_ Zone \_\_\_\_\_  
 X \_\_\_\_\_  
 Y \_\_\_\_\_  
 Estab. By \_\_\_\_\_  
 Field Book No. \_\_\_\_\_  
 Where Filed \_\_\_\_\_

9. Evaluation  
 Authentic \_\_\_\_\_  
 Needs Verif. \_\_\_\_\_ Monument No  
 Re-estab. X Survey \_\_\_\_\_  
 Land Status F.S.

6. Signed D.M. Miller Title \_\_\_\_\_ Date \_\_\_\_\_

D-7100-52d (10/78)  
USDA-FOREST SERVICE

Index

File No.

CORNER RECORD (SEARCH)

Ref. FSM 7151.4

Tract or

Survey No.

Cor.

No.

T 22 s. R. 13 E. R.D. FT. ROCK County DESCHUTES See Cor  
Merid. WILLAMETTE N.F. DESCHUTES State OREGON

A-25

SEE: 2-25

T 21 S R 13 E

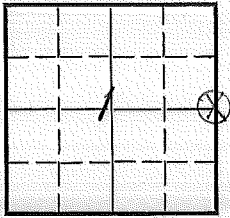
SF/NF

LAND CORNER RECORD  
(Rectangular)

C-25 5680-2

1. T 22S R 13E No. C-25 Cor. 44 Mer will State Oregon N. F. Deschutes Dist. Fort Rock

2. Corner Status



3. Original Description \_\_\_\_\_ Vol. \_\_\_\_\_ Page \_\_\_\_\_ Where Recorded \_\_\_\_\_

4. Description of Corners: BT 1/4 Sec. P.P. Dia 22.3" Bearing S61°W. Dis 14'1"

5. Investigation Notes: Metal Location Poster on P.P. 22.3" Dia. on N.W. side. Bearing N61°E - Dis 14'2" to corner.

7. Photo Identification

Photo No. \_\_\_\_\_  
Ident. By: \_\_\_\_\_

8. Plane Coordinate Position Data

State \_\_\_\_\_ Zone \_\_\_\_\_  
X \_\_\_\_\_  
Y \_\_\_\_\_  
Estab. By \_\_\_\_\_  
Field Book No. \_\_\_\_\_  
Where Filed \_\_\_\_\_

9. Evaluation

Authentic \_\_\_\_\_  
Needs Verif. \_\_\_\_\_ Monument No  
Re-estab.  Survey \_\_\_\_\_  
Land Status F.S.

6. Signed G.M. Bail Title Forester Date Sept 22 - 1952

U. S. Department of Agriculture  
FOREST SERVICE

B-4

*Deschutes* NATIONAL FOREST  
CORNERS OF THE PUBLIC SURVEY

T. 22.5 R. 13E *Willamette Mer.*  
1/4 Section Corner common to Sections

Corner consists of a stake (not) in place

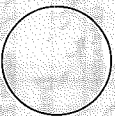
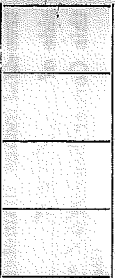
State condition Assumed

Dimensions above ground \_\_\_\_\_ inches.

Sketch grooves, letters, figures, or notches, on proper face or edge.

STONE CORNERS

METAL CORNERS



Mound of \_\_\_\_\_ is located \_\_\_\_\_

Pis are located

Sketch markings of Bearing Trees (or Rocks) in proper box and fill blanks below, giving bearings from Corner to Trees and Distances in Links.

<u>14</u> <u>5</u>			
<u>BT</u>			

Species RP

Diameter 22.3"

Bearing 56.1°W

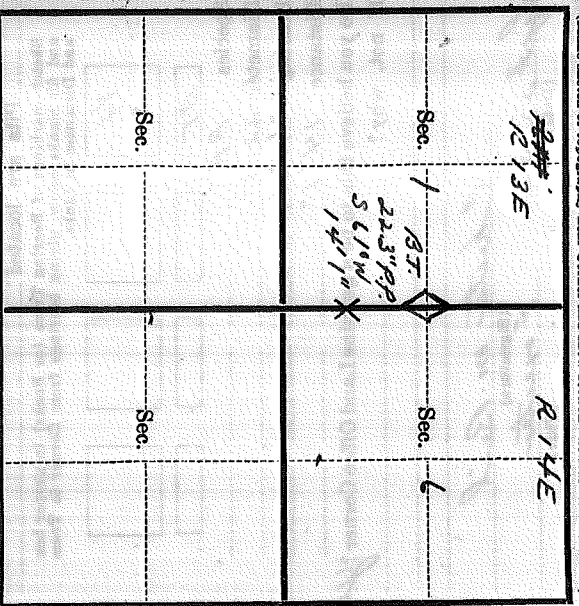
Distance 14.1"

Do you believe this to be a genuine Land Office Corner? Yes  
If not, why?

Chetan M. Paul  
(Signature)  
Forester  
(Title)  
Sept. 23, 52  
(Date)

T. 22 S R. 13 E W. Mer.

(Make sketch of topography near Corner and show section line markers thus "X")



Metal Location Poster is on a Landeresse pine  
tree 22.3 inches diameter, on the North west  
side of tree from which  
this Corner bears N 10° E, 141.2 from which  
(Bearing) (Distance) ~~Corner~~  
Section line marker between Secs. 1 and 6 is on  
a tree on the Rimic Bath Rd  
(Tree, post, etc.) (Name of road, trail, etc.)  
located 22 chains ~~from~~ S from ~~corner~~;  $\frac{1}{2}$  (or  $\frac{3}{4}$ )  
(Cross out nonapplicable)

Give any further facts needed to find Corner again:

-----  
-----  
-----  
-----  
-----

## Section Line Marker Record

#2129 Newberry Crater Road or Trail Fort Rock DistrictSec. Line between 4 & 3 T. 22 S. R. 13 E. \_\_\_\_\_Sec. \_\_\_\_\_ Cor. 165 Ft. S  
¼ or Sec. feet N. S. E. or W.Posted on S side R  
N. S. E. or W. R. or T.Posted 9/14/53 By M.L.C.  
Date

(Approx. \_\_\_\_\_)

Cor. Found (Exact. X)(Paced X)

Distance (Chained \_\_\_\_\_)

6	5	4	X 3	2	1
7	8	9	10	11	12
18	17	16	15	14	13
19	20	21	22	23	24
30	29	28	27	26	25
31	32	33	34	35	36

Indicate position of marker by  
red X

If marker is on Twp. or Rge. line, reference TWP. NORTH or Rge. EAST of that line.



## Section Line Marker Record

#2129 Newberry Crater Road or Trail Fort Rock DistrictSec. Line between 2 & 3 T. 22 S. R. 13 E. \_\_\_\_\_Sec. \_\_\_\_\_ Cor. 195 Ft. S  
¼ or Sec. feet N. S. E. or W.Posted on S side Rd.  
N. S. E. or W. R. or T.Posted 9/14/53 By M. I. C.  
Date

(Approx. \_\_\_\_\_)

Cor. Found (Exact. X)(Paced X (Replaces old board))

Distance (Chained \_\_\_\_\_)

6	5	4	3	2	1
7	8	9	10	11	12
18	17	16	15	14	13
19	20	21	22	23	24
30	29	28	27	26	25
31	32	33	34	35	36

Indicate position of marker by  
red X

If marker is on Twp. or Rge. line, reference TWP. NORTH or Rge. EAST of that line.

## Section Line Marker Record

#2129 Newberry Crater Road or Trail Fort Rock DistrictSec. Line between 2 & 1 T. 22 S. R. 13 E. \_\_\_\_\_Sec. \_\_\_\_\_ Cor. 950 Ft. S  
¼ or Sec. \_\_\_\_\_ feet \_\_\_\_\_ N. S. E. or W. \_\_\_\_\_Posted on S side Rd.  
N. S. E. or W. \_\_\_\_\_ R. or T. \_\_\_\_\_Posted 9/14/53 By M. L. C.  
Date \_\_\_\_\_

(Approx. \_\_\_\_\_)

Cor. Found (Exact. X \_\_\_\_\_)(Paced X (Replaces old board) \_\_\_\_\_)

Distance (Chained \_\_\_\_\_)

6	5	4	3	2	1
7	8	9	10	11	12
18	17	16	15	14	13
19	20	21	22	23	24
30	29	28	27	26	25
31	32	33	34	35	36

Indicate position of marker by  
red X

If marker is on Twp. or Rge. line, reference TWP. NORTH or Rge. EAST of that line.

Index File No. E-25

**CORNER RECORD (SEARCH)**

(Ref. FSM 7151.4)

Tract or Survey No. \_\_\_\_\_ Cor. No. E-25

T 22S R. 13E

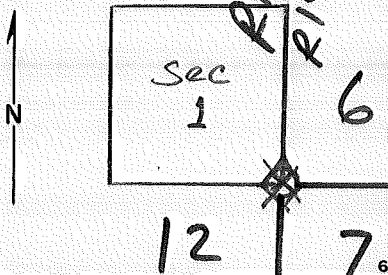
R.D. Fort Rock County Deschutes

See Cor

Merid. Will.

N.F. Deschutes State Ore.

CORNER DIAGRAM



DESCRIBE CORNER MONUMENT FOUND

DESCRIBE BEARING TREES OR OTHER OFFICIAL ACCESSORIES FOUND

N.E. BT. (dead & down) USFS-BT. Tag.  
S.W. BT. (dead & down) USFS-BT. Tag.

PHOTO IDENTIFICATION DATA

Photo No. 65-VPOH  
Filed At. Mendocino, Ca.  
Object Ident. Sketch  
Ident. By J.N. Tennant USBS  
5/77 Signature

(Line 2 - Exposure 166)

DESCRIBE CORNER LOCATION RELATIVE TO NEAR-BY FEATURES, ALSO HOW TO REACH CORNER

line marker 990 Ft. W. of cor.  
7651 K.H.T.  
line marker 540' W. of cor.

PLANE COORDINATE POSITION DATA

State \_\_\_\_\_ Zone \_\_\_\_\_  
X \_\_\_\_\_  
Y \_\_\_\_\_  
Estab. By \_\_\_\_\_  
Agency

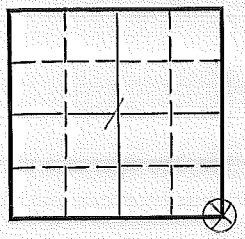
Signature \_\_\_\_\_ Title \_\_\_\_\_ Division \_\_\_\_\_ Headquarters \_\_\_\_\_ Date \_\_\_\_\_ 7100-52 (3/68)

# LAND CORNER RECORD

(Rectangular)

1. T. 22S R. 13E No. 525 Cor. Sec Mer Will State Oregon N. F. Dasebates Dist. Fort Rock

2. Corner Status



3. Original Description \_\_\_\_\_ Vol. \_\_\_\_\_ Page \_\_\_\_\_ Where Recorded \_\_\_\_\_

4. Description of Corners: B.T. - L.P. Dia. 10". Bearing N 36°W - Dis. - 22' 4"  
*(This description is not legible)*  
B.T. T22S. R14E Sec. 9 - L.P. 12" Dia. Bearing S 67°E Dis - 9.7'  
B.T. T22S, R13E Sec. 12 L.P. 7.2" Dia Bearing S 50°W. Dis - 31' 6" -  
This B.T. Down & Down

5. Investigation Notes: See attached information

7. Photo Identification

Photo No. \_\_\_\_\_  
Ident. By: \_\_\_\_\_

8. Plane Coordinate Position Data

State \_\_\_\_\_ Zone \_\_\_\_\_  
 X \_\_\_\_\_  
 Y \_\_\_\_\_  
 Estab. By \_\_\_\_\_  
 Field Book No. \_\_\_\_\_  
 Where Filed \_\_\_\_\_

9. Evaluation

Authentic \_\_\_\_\_  
 Needs Verif. \_\_\_\_\_ Monument No  
 Re-estab.  Survey \_\_\_\_\_  
 Land Status FD

6. Signed Abaster M Bail Title Treasurer Date Sept. 26 - 1952

U. S. Department of Agriculture  
FOREST SERVICE

File in  
T225 R13C

Reschutes NATIONAL FOREST  
CORNERS OF THE PUBLIC SURVEY

T. 225 R. 13 ~~13E~~ Wilamette Mer.

Section

Corner common to Sections

1, 6, 7, and 12

Corner consists of a Stake (not in place)

State condition Assumed

Dimensions above ground \_\_\_\_\_ inches

Sketch grooves, letters, figures, or notches, on proper face or edge.

CARDINAL POSITION

DIAGONAL POSITION

N	W	S	E	NW	SW
				SE	NE

Mound of \_\_\_\_\_ is located \_\_\_\_\_

Pits are located \_\_\_\_\_

Sketch markings of Bearing Trees (or Rocks) in proper box and fill blanks below, giving bearings from Corner to Trees and Distances in Links.

SE with Lead	T225 R13E 57	T225 R13S 512	
	BT	BT	

Species L.P. L.P. L.P. \_\_\_\_\_

Diameter 1 1/2" 1 1/2" 7/2" \_\_\_\_\_

Bearing N 36° W S 67° E S 50° W \_\_\_\_\_

Distance 22 1/4" 97' 31' 6" \_\_\_\_\_

Do you believe this to be a genuine Land Office Corner? Yes

If not, why? \_\_\_\_\_

Chatter m. Reid

(Signature)

Sept 28 1952

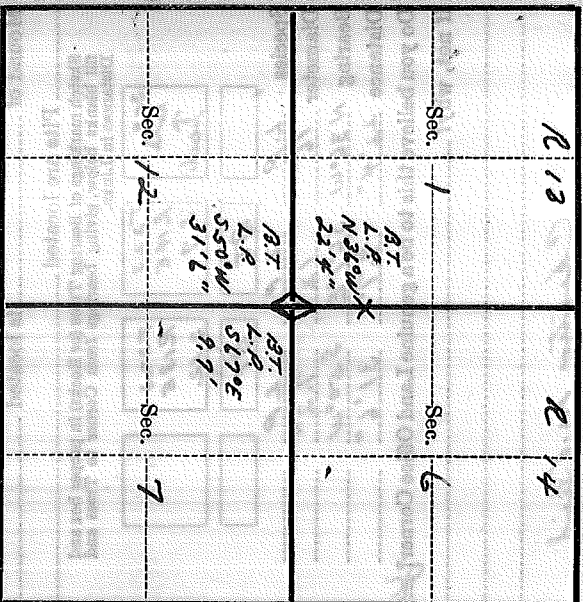
(Date)

Forester

(Title)

T. 22 S R. 13 & 14 E W. Mer.

(Make sketch of topography near Corner and show section line markers than "X")



Metal Location Poster is on a lodgpole pine tree 4 inches diameter, on the north

side of tree from which this Corner bears S 8° W 11.1' Chains.

Section line marker between Secs. 1 and 6 is on a tree on the Amie B. H. Co. Rd # 2112 (Tree, post, etc.) (Name of road, trail, etc.)

located 120 ft Chains N, E from Sec. Utr; 400 ft Chains from (Cross out nonapplicable)

Give any further facts needed to find Corner again:

Scrubbing on 16" lodgpole, bearing N. 36° W,  
is not legible, but 1/2 azel for scribbing  
can be distinguished.  
72 inch lodgpole, bearing S. 50° W, is  
dead and down.

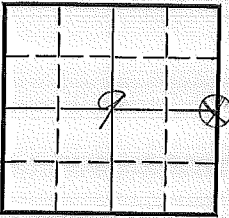
# LAND CORNER RECORD

(Rectangular)

G-13 5680-2

1. T 22S R 13E No. 9-13 Cor. 1/4 Mer. Will State Oregon N. F. Deschutes Dist. Fort Rock

2. Corner Status



3. Original Description \_\_\_\_\_ Vol. \_\_\_\_\_ Page \_\_\_\_\_ Where Recorded \_\_\_\_\_

4. Description of Corners: BT = 1/4 Sec. S near 6" Dia. Bearing NW. Dis. 6'  
BT 1/4 S L.P. 6" Dia. Bearing E Dis. 4'

5. Investigation Notes:

7. Photo Identification

Photo No. \_\_\_\_\_  
Ident. By: \_\_\_\_\_

8. Plane Coordinate Position Data

State \_\_\_\_\_ Zone \_\_\_\_\_  
X \_\_\_\_\_  
Y \_\_\_\_\_  
Estab. By \_\_\_\_\_  
Field Book No. \_\_\_\_\_  
Where Filed \_\_\_\_\_

9. Evaluation

Authentic \_\_\_\_\_  
Needs Verif. \_\_\_\_\_ Monument No  
Re-estab.  Survey \_\_\_\_\_  
and Status F.L.

6. Signed G.A. Bigelow Title Forester Date 6-30-55

# PERPETUATION RECORD

10. Monument:

11. Accessories

Field Book \_\_\_\_\_ Page \_\_\_\_\_

12. Set By \_\_\_\_\_ Title \_\_\_\_\_

License \_\_\_\_\_ Agency \_\_\_\_\_ Date \_\_\_\_\_

13. Recorded By \_\_\_\_\_ Volume \_\_\_\_\_ Page \_\_\_\_\_  
(Agency)

(Date) (City) (County) (State)

14. Remarks:



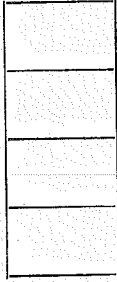
*Describes* NATIONAL FOREST  
CORNERS OF THE PUBLIC SURVEY

T. 22 S. R. 13 E. Mer. 14  
Corner common to Sections 9, 10, and 10

Corner consists of a not found (not) in place  
State condition \_\_\_\_\_

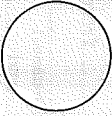
Dimensions above ground \_\_\_\_\_ inches.  
Sketch grooves, letters, figures, or notches, on proper face or edge.

STONE CORNERS



N W S E

METAL CORNERS



Mound of \_\_\_\_\_ is located \_\_\_\_\_

Pits are located \_\_\_\_\_

Sketch markings of Bearing Trees (or Rocks) in proper box  
and fill blanks below, giving bearings from Corner to Trees  
and Distances in Links.

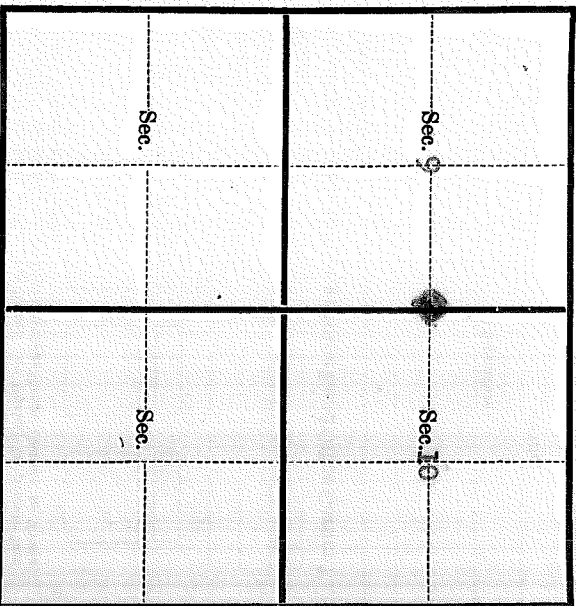
	$\frac{1}{4}$ S.		$\frac{1}{4}$ S.
	PT		PT

Species \_\_\_\_\_ SMC \_\_\_\_\_ LP  
 Diameter \_\_\_\_\_ 6" \_\_\_\_\_ 6"  
 Bearing \_\_\_\_\_ MM \_\_\_\_\_ E  
 Distance \_\_\_\_\_ 6' \_\_\_\_\_ 1'  
 Do you believe this to be a genuine Land Office Corner? Yes  
 If not, why? \_\_\_\_\_

\_\_\_\_\_  
Charles A. Ringlow  
 (Signature) Forester  
 (Title)  
6/30/55  
 (Date)

T. 22 S. R. 13 E. M. 11 Mer.

(Make sketch of topography near Corner and show section line markers thus "X")



Metal Location Poster is on a \_\_\_\_\_

tree \_\_\_\_\_ inches diameter, on the \_\_\_\_\_

side of \_\_\_\_\_ from which

this Corner bears \_\_\_\_\_° \_\_\_\_\_' \_\_\_\_\_" Chains.

Section line marker between Secs. \_\_\_\_\_ and \_\_\_\_\_ is on

a \_\_\_\_\_ on the \_\_\_\_\_ (Name of road, trail, etc.)

located \_\_\_\_\_ chains E, W, N, S, from Sec. Cor.;  $\frac{1}{4}$  Cor.; Witness Cor.

(Cross out nonapplicable)

Give any further facts needed to find Corner again:

\_\_\_\_\_  
\_\_\_\_\_  
\_\_\_\_\_  
\_\_\_\_\_  
\_\_\_\_\_  
\_\_\_\_\_  
\_\_\_\_\_  
\_\_\_\_\_

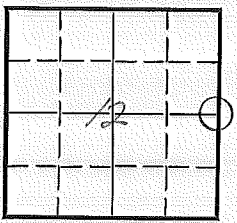
# LAND CORNER RECORD

(Rectangular)

G-25 5680-2

1. T. 22S R. 13E No. 9-25 Cor. 1/4 Mer. Will State Oregon N. F. Daschutes Dist. Fort Rock

2. Corner Status



3. Original Description \_\_\_\_\_ Vol. \_\_\_\_\_ Page \_\_\_\_\_ Where Recorded \_\_\_\_\_

4. Description of Corners: None

5. Investigation Notes:

7. Photo Identification

Photo No. \_\_\_\_\_

Ident. By: \_\_\_\_\_

8. Plane Coordinate Position Data

State \_\_\_\_\_ Zone \_\_\_\_\_

X \_\_\_\_\_

Y \_\_\_\_\_

Estab. By \_\_\_\_\_

Field Book No. \_\_\_\_\_

Where Filed \_\_\_\_\_

9. Evaluation

Authentic \_\_\_\_\_

Needs Verif. \_\_\_\_\_ Monument \_\_\_\_\_

Re-estab. \_\_\_\_\_ Survey \_\_\_\_\_

Land Status FL

6. Signed G.M. Beil Title Forester Date 9-29-52

# PERPETUATION RECORD

10. Monument:

11. Accessories

		Field Book _____	Page _____
12. Set By _____	Title _____	13. Recorded By _____	Volume _____
License _____	Agency _____	(Agency)	Page _____
Date _____		(Date) _____	(City) _____
		(County) _____	(State) _____

14. Remarks:

## U. S. Department of Agriculture

FOREST SERVICE

D-4

Reserves NATIONAL FOREST

## CORNERS OF THE PUBLIC SURVEY

T. 225 R. 13E Willamette Mer.1/4

Corner common to Sections

\_\_\_\_\_, \_\_\_\_\_, and \_\_\_\_\_

Corner consists of a red fence (not) in place

State condition \_\_\_\_\_

Dimensions above ground \_\_\_\_\_ inches

Sketch grooves, letters, figures, or notches, on proper face or edge.

CARDINAL POSITION

DIAGONAL POSITION

N	W	S	E	NW	SW SE NE

Mound of \_\_\_\_\_ is located \_\_\_\_\_

Pits are located \_\_\_\_\_

Sketch markings of Bearing Trees (or Rocks) in proper box and fill blanks below, giving bearings from Corner to Trees and Distances in Links.


Species \_\_\_\_\_

Diameter \_\_\_\_\_

Bearing \_\_\_\_\_

Distance \_\_\_\_\_

Do you believe this to be a genuine Land Office Corner? \_\_\_\_\_

If not, why? \_\_\_\_\_

See sketchCharles W. Reich

(Signature)

9/29/02

(Date)

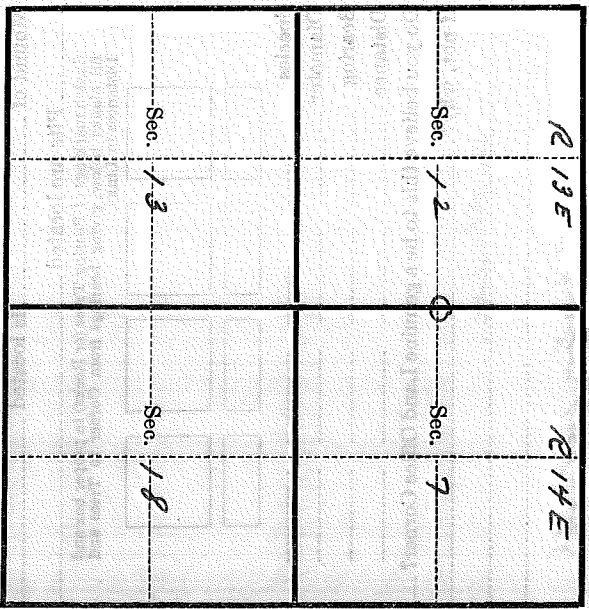
Reicher

(Title)

16-12759

T. 225 R. 135 W Mer.

Make sketch of topography near Corner and show section line markers thus "X"



Metal Location Poster is on a

tree \_\_\_\_\_ inches diameter, on the

side of \_\_\_\_\_ from which

this Corner bears \_\_\_\_\_ (Bearing) \_\_\_\_\_ (Distance) Chains.

Section line marker between Secs. 1 and 6 is on

a tree on the Amice Bethel 2112

located 1850 ft obscure N. 1/2 from Section; 1/2 bar; Witness etc.

(Cross out nonapplicable)

Give any further facts needed to find Corner again:

No witness former corner  
is all ground topography and  
was fully located same originally  
established

Index  
File No. J-25  
T 22S R. 13E  
Merid. Will

**CORNER RECORD (SEARCH)**

(Ref. FSM 7151.4)

Tract or  
Survey No. \_\_\_\_\_  
Cor. No. J-25

R.D. Fort Rock County Deschutes  
N.F. Deschutes State Ore

See Cor

**CORNER DIAGRAM**



**DESCRIBE CORNER MONUMENT FOUND**

**DESCRIBE BEARING TREES OR OTHER OFFICIAL ACCESSORIES FOUND**

SE. BT. (Dead) USFS BT. Tag.

**PHOTO IDENTIFICATION DATA**

Photo No. \_\_\_\_\_  
Filed At. \_\_\_\_\_  
Object Ident. \_\_\_\_\_  
Ident. By \_\_\_\_\_  
*Signature*

Photo - not Identified  
J.N. Tennant - USGS 5/77

**DESCRIBE CORNER LOCATION RELATIVE TO NEAR-BY FEATURES, ALSO HOW TO REACH CORNER**

Loc. Tag 386' East of Cor.

**PLANE COORDINATE POSITION DATA**

State \_\_\_\_\_ Zone \_\_\_\_\_  
X \_\_\_\_\_  
Y \_\_\_\_\_  
Estab. By \_\_\_\_\_  
*Agency*

Signature

Title

Division

Headquarters

Date

7100-52 (3/68)

CORNER RECORD (PERPETUATION)

MONUMENT : DESCRIBE NEW MONUMENT SET, OR WORK DONE TO PRESERVE EXISTING MONUMENT

9

ACCESSORIES : DESCRIBE NEW BT'S WITNESS OBJECTS ETC. ESTABLISHED, OR WORK DONE TO PRESERVE EXISTING EVIDENCE

10

Work Done By \_\_\_\_\_ Title \_\_\_\_\_ Date \_\_\_\_\_ State Registration No. or Agency \_\_\_\_\_

Certified Cor. Record Prepared ? Yes No Filed At: \_\_\_\_\_ Date \_\_\_\_\_

11

REMARKS

Index File No. T. R. M. Tract or Surv. No. Cor. **J-25**

12

13



LAND CORNER RECORD

(Rectangular)

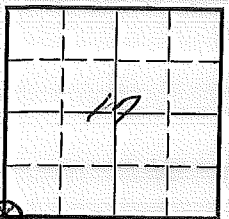
N-05 5680-2

1. T. 22S 17E No. N-5 Cor. Sec Mer. Wm. State Oregon N. F. Deschutes Dist. Fort Rock

2. Corner Status

3. Original Description \_\_\_\_\_ Vol. \_\_\_\_\_ Page \_\_\_\_\_ Where Recorded \_\_\_\_\_

4. Description of Corners:



7. Photo Identification

5. Investigation Notes:  
 1 B.T. found  
 Loc. Board 330' N, of cor.  
 1960

Photo No. \_\_\_\_\_  
 Ident. By: \_\_\_\_\_

8. Plane Coordinate Position Data

State \_\_\_\_\_ Zone \_\_\_\_\_  
 X \_\_\_\_\_  
 Y \_\_\_\_\_  
 Estab. By \_\_\_\_\_  
 Field Book No. \_\_\_\_\_  
 Where Filed \_\_\_\_\_

9. Evaluation

Authentic \_\_\_\_\_  
 Needs Verif. \_\_\_\_\_ Monument No. \_\_\_\_\_  
 Re-estab.  Survey \_\_\_\_\_  
 Land Status F.S.

6. Signed D.M. Miller Title \_\_\_\_\_ Date 1962

PERPETUATION RECORD

10. Monument:

11. Accessories

12. Set By _____ Title _____			Field Book _____	Page _____		
License _____	Agency _____	Date _____	13. Recorded By _____ (Agency)	Volume _____	Page _____	
			(Date)	(City)	(County)	(State)

14. Remarks:

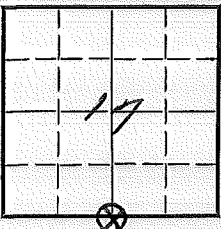
N-05

LAND CORNER RECORD

N-07

1. T 22S R 13E No. N-7 Cor. 3/4 Mer. Wm. State Oregon (Rectangular) N. F. Deschutes Dist. Fort Rock

2. Corner Status



7. Photo Identification

Photo No. \_\_\_\_\_  
Ident. By: \_\_\_\_\_

8. Plane Coordinate Position Data

State \_\_\_\_\_ Zone \_\_\_\_\_  
X \_\_\_\_\_  
Y \_\_\_\_\_  
Estab. By \_\_\_\_\_  
Field Book No. \_\_\_\_\_  
Where Filed \_\_\_\_\_

9. Evaluation

Authentic \_\_\_\_\_  
Needs Verif. \_\_\_\_\_ Monument No \_\_\_\_\_  
Re-estab. X Survey \_\_\_\_\_  
Land Status F.S.

3. Original Description \_\_\_\_\_ Vol. \_\_\_\_\_ Page \_\_\_\_\_ Where Recorded \_\_\_\_\_

4. Description of Corners:

5. Investigation Notes:

2 B.T.s found  
Loc. Board 460' W. 1933 Steigleder.

6. Signed D.M. Miller Title \_\_\_\_\_ Date 1962

PERPETUATION RECORD

10. Monument:

11. Accessories

		Field Book _____	Page _____
12. Set By _____	Title _____	13. Recorded By _____	Volume _____
License _____	Agency _____	(Agency)	Page _____
Date _____		(Date) _____	(City) _____
		(County) _____	(State) _____

14. Remarks:

N-07

## Section Line Marker Record

#2227 Red Butte Road or Trail Fort Rock District

Sec. Line between 16 &amp; 21 T. 22 S. R. 13 E.

1/4 990 Cor. Ft. E  
1/4 or Sec. feet N. S. E. or W.Posted on E side Rd.  
N. S. E. or W. R. or T.

Posted 8/11/53 By M. L. C.

Replaced 7/30/67<sup>Date</sup> W. T. Williamson  
(Approx. \_\_\_\_\_)

Cor. Found (Exact. X \_\_\_\_\_)

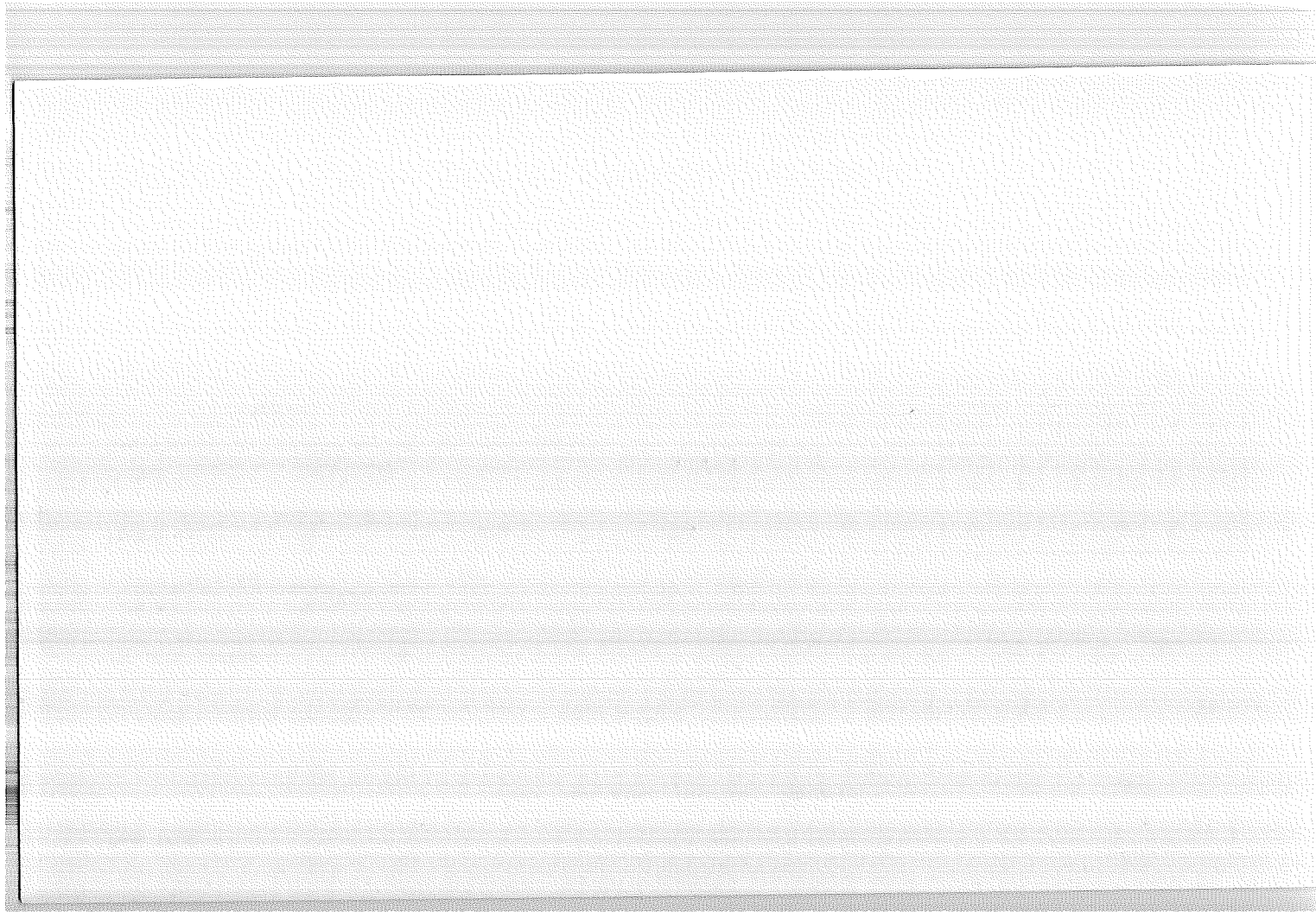
(Paced X \_\_\_\_\_)

Distance (Chained \_\_\_\_\_)

6	5	4	3	2	1
7	8	9	10	11	12
18	17	16	15	14	13
19	20	21	22	23	24
30	29	28	27	26	25
31	32	33	34	35	36

Indicate position of marker by  
red X

If marker is on Twp. or Rge. line, reference TWP. NORTH or Rge. EAST of that line.



## Section Line Marker Record

Fire Road 10B Road or Trail Fort Rock District

Sec. Line between 15 & 14 T. 22 S. R. 13 E.

*Also - 371 w. of corner*

Sec. \_\_\_\_\_ Cor. 1014 Ft. S  
¼ or Sec. feet N. S. E. or W.

Posted on N side R  
N. S. E. or W. R. or T.

Posted 6/23/57 By K.H.T.  
Date

(Approx. \_\_\_\_\_)

Cor. Found (Exact. X)

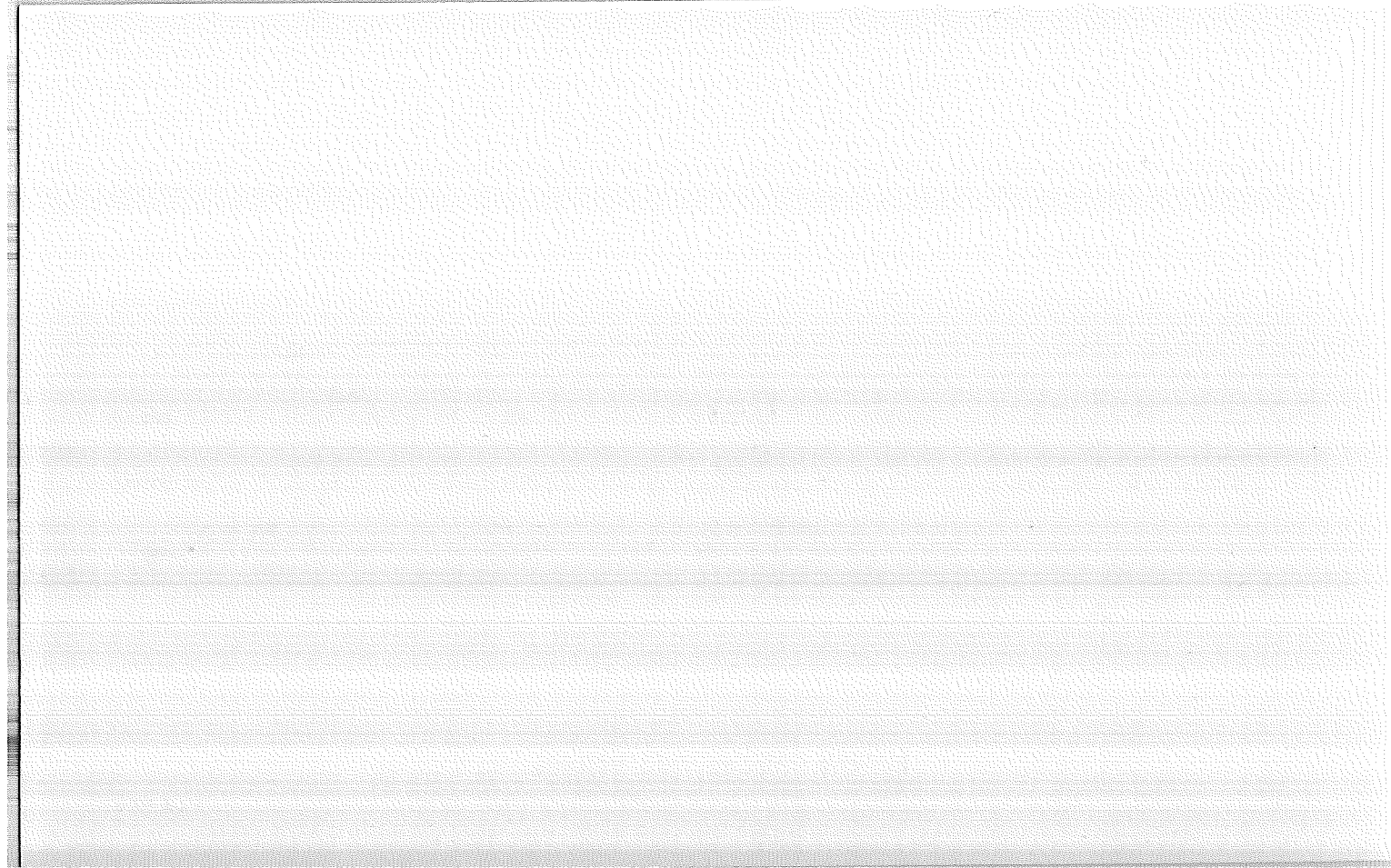
(Paced X)

Distance (Chained \_\_\_\_\_)

6	5	4	3	2	1
7	8	9	10	11	12
18	17	16	15	14	13
19	20	21	22	23	24
30	29	28	27	26	25
31	32	33	34	35	36

Indicate position of marker by  
red X

If marker is on Twp. or Rge. line, reference TWP. NORTH or Rge. EAST of that line.





## Section Line Marker Record

Fire Road #10 Road or Trail Fort Rock District

Sec. Line between 23 & 22 T. 22 S. R. 13 E.         

Sec.          Cor. 870 Ft. N  
¼ or Sec. feet N. S. E. or W.

Posted on S side R  
N. S. E. or W. R. or T.

Posted 6/23/57 By M. J. C.  
Date

(Approx.         )

Cor. Found (Exact. X)

(Paced X)

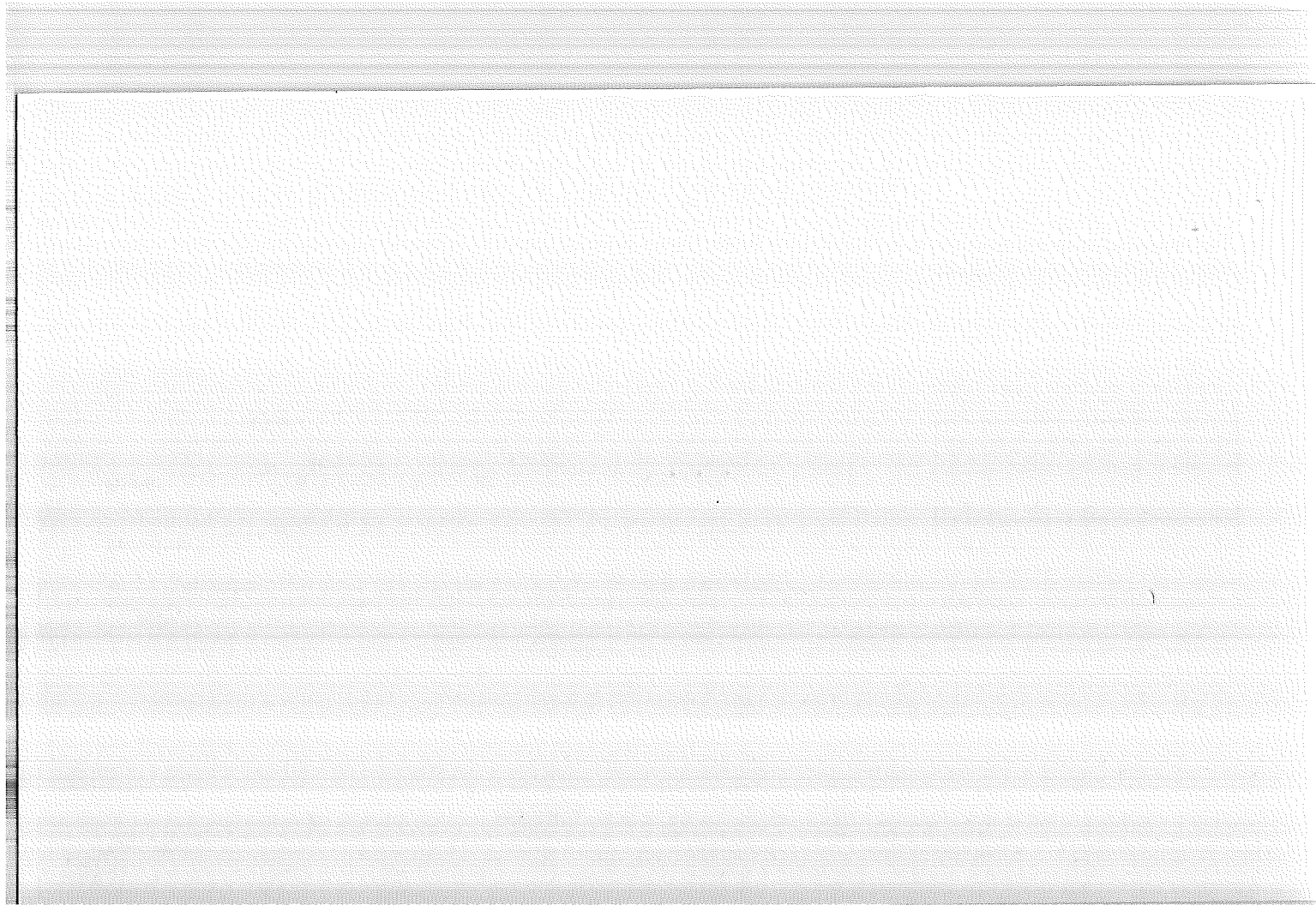
Distance (Chained         )

*Also 79A' E of Cor,  
6157 KHT*

6	5	4	3	2	1
7	8	9	10	11	12
18	17	16	15	14	13
19	20	21	22	X 23	24
30	29	28	27	26	25
31	32	33	34	35	36

Indicate position of marker by  
red X

If marker is on Twp. or Rge. line, reference TWP. NORTH or Rge. EAST of that line.



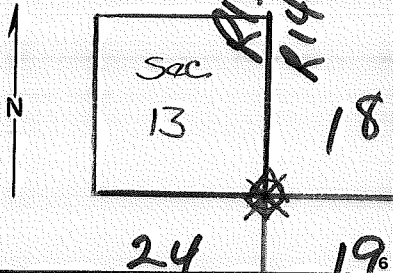
Index  
 File No. N-25  
 T 22S R. 13E  
 Merid. Will

**CORNER RECORD (SEARCH)**  
 (Ref. FSM 7151.4)

Tract or  
 Survey No. \_\_\_\_\_  
 Cor. No. N-25

R.D. Fort Rock County Deschutes  
 N.F. Deschutes State Ore. See Crv

CORNER DIAGRAM



DESCRIBE CORNER MONUMENT FOUND

DESCRIBE BEARING TREES OR OTHER OFFICIAL ACCESSORIES FOUND

N.E. B.T. (Down & dead)  
 USFS B.T. Tag.

PHOTO IDENTIFICATION DATA

Photo No. GS-VDOH  
 Filed At. Menlo Park, Ca  
 Object Ident. Sketch  
 Ident. By J.N. Tennant-USGS  
5/77 Signature

(Line 2 - Exposure 167)

DESCRIBE CORNER LOCATION RELATIVE TO NEAR-BY FEATURES, ALSO HOW TO REACH CORNER

PLANE COORDINATE POSITION DATA

State \_\_\_\_\_ Zone \_\_\_\_\_  
 X \_\_\_\_\_  
 Y \_\_\_\_\_  
 Estab. By \_\_\_\_\_  
 Agency

Signature

Title

Division

Headquarters

Date

7100-52 (3/68)

CORNER RECORD (PERPETUATION)

MONUMENT: DESCRIBE NEW MONUMENT SET, OR WORK DONE TO PRESERVE EXISTING MONUMENT

9

ACCESSORIES : DESCRIBE NEW BT'S WITNESS OBJECTS ETC. ESTABLISHED, OR WORK DONE TO PRESERVE EXISTING EVIDENCE

10

Work Done By \_\_\_\_\_ Title \_\_\_\_\_ Date \_\_\_\_\_ State Registration No. or Agency \_\_\_\_\_

Certified Cor. Record Prepared ? Yes No Filed At: \_\_\_\_\_ Date \_\_\_\_\_

11

REMARKS

12

Index File No.

T.

R.

M.

Tract or Surv. No.

Cor. **N-25** 13

## Section Line Marker Record

#2227 Red Butte Road or Trail Fort Rock District

Sec. Line between 21 &amp; 22 T. 22 S. R. 13 E.

1/4 Cor. 150 Ft. S  
1/4 or Sec. feet N. S. E. or W.Posted on N side Rd.  
N. S. E. or W. R. or T.

Posted 8/12/53 By M. L. C.

Replaced 7/30/67<sup>Date</sup> W. T. Williamson  
(Approx. \_\_\_\_\_)

Cor. Found (Exact. \_\_\_\_\_ X \_\_\_\_\_)

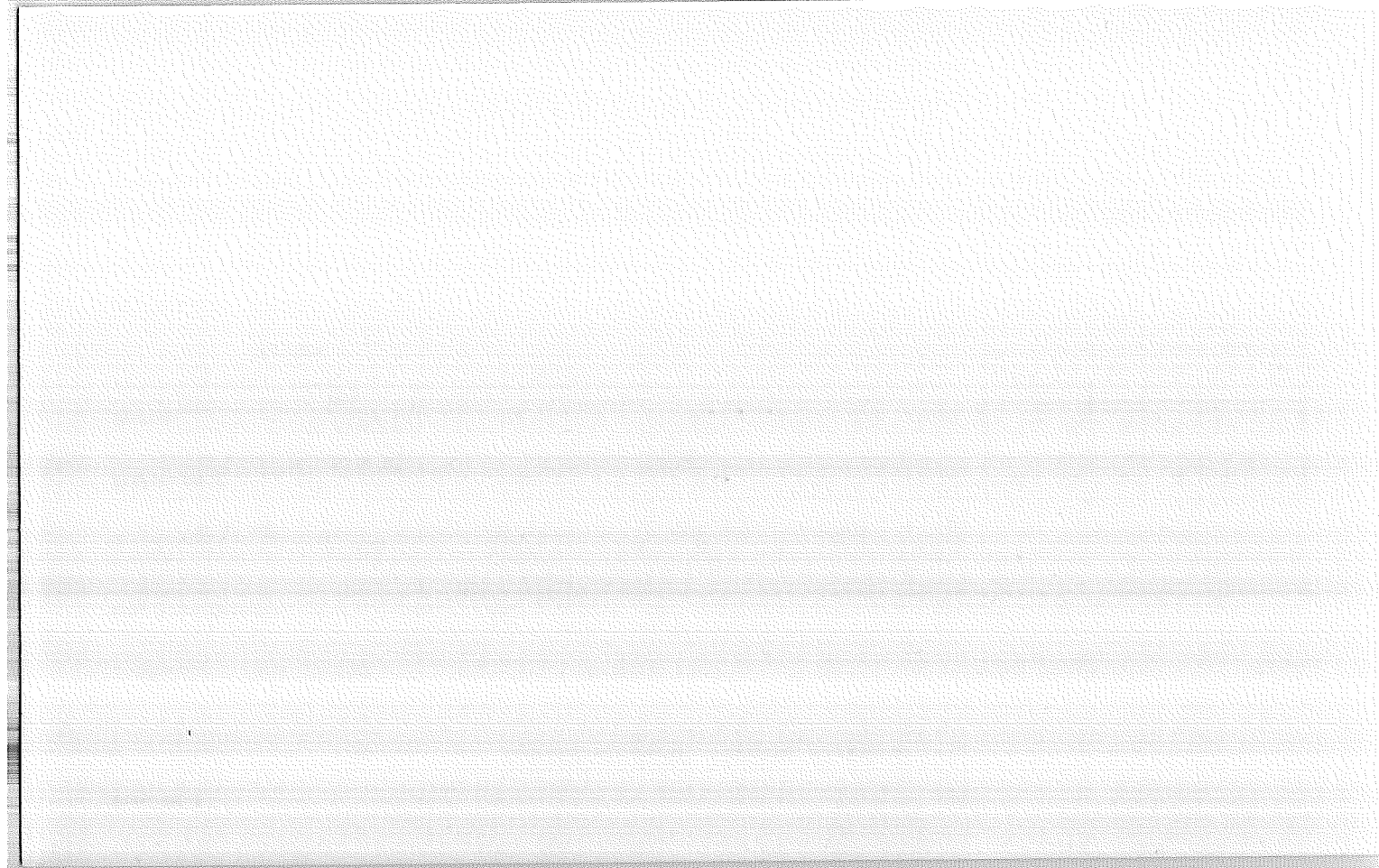
(Paced \_\_\_\_\_ X \_\_\_\_\_)

Distance (Chained \_\_\_\_\_)

6	5	4	3	2	1
7	8	9	10	11	12
18	17	16	15	14	13
19	20	21	22	23	24
30	29	28	27	26	25
31	32	33	34	35	36

Indicate position of marker by  
red X

If marker is on Twp. or Rge. line, reference TWP. NORTH or Rge. EAST of that line.



## Section Line Marker Record

#2227 Red Butte Road or Trail Fort Rock District

Sec. Line between 22 &amp; 23 T. 22 S. R. 13 E.

Sec.            Cor. 1000 Ft. S  
¼ or Sec. feet N. S. E. or W.Posted on N side Rd.  
N. S. E. or W. R. or T.Posted 8/12/53 By M. L. C.  
Date(Approx.           )Cor. Found (Exact. X)(Paced X)Distance (Chained           )

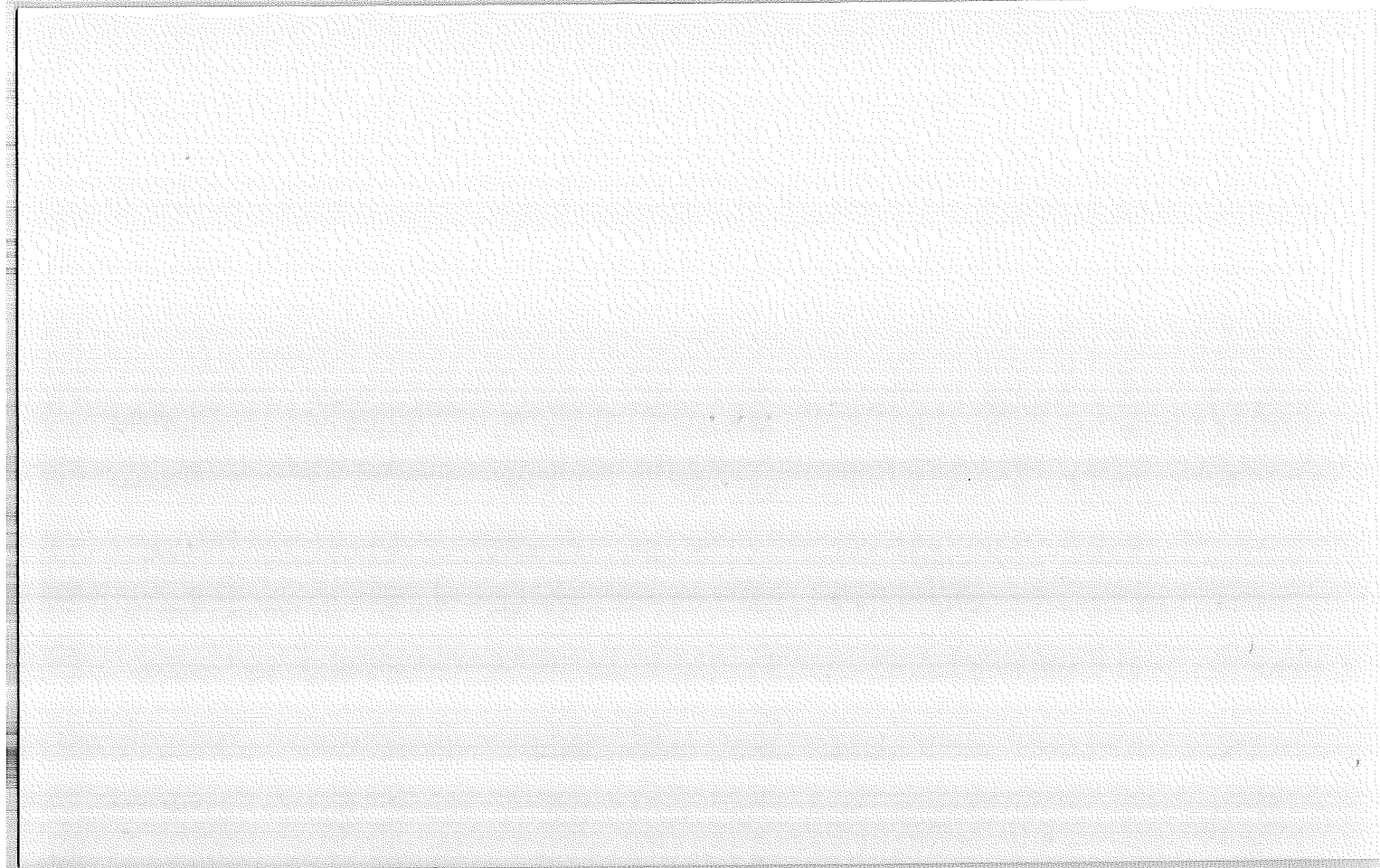
If marker is on Twp. or Rge. line, reference TWP. NORTH or Rge. EAST of that line.

T. 22 S. R. 13 E.

Also 567' (paced) W. of  
Cor. 6/57. K. H. T.

6	5	4	3	2	1
7	8	9	10	11	12
18	17	16	15	14	13
19	20	21	22	23	24
30	29	28	27	26	25
31	32	33	34	35	36

Indicate position of marker by  
red XAlso 720' E. of cor.  
Replaced 7/67 W.T.W.





Index  
 File No. R-21  
 T 22S R. 13E  
 Merid. Will

CORNER RECORD (SEARCH)

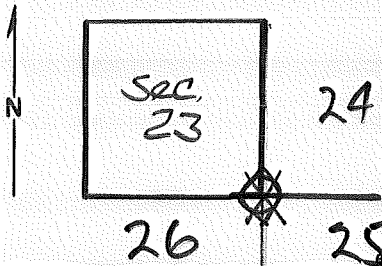
(Ref. FSM 7151.4)

R.D. Fort Rock County Deschutes  
 N.F. Deschutes State Ore

Tract or  
 Survey No. \_\_\_\_\_  
 Cor. No. R-21

See CN

CORNER DIAGRAM



DESCRIBE CORNER MONUMENT FOUND

DESCRIBE BEARING TREES OR OTHER OFFICIAL ACCESSORIES FOUND

4 BT's & original stake  
 (N.W. & S.W. BT's dead & down)

PHOTO IDENTIFICATION DATA

Photo No. GS-VDDH  
 Filed At. Menlo Park, Ca  
 Object Ident. Sketch  
 Ident. By J.N. Tennant USGS  
10/77 Signature

(Line 2 - Exposure 211)

DESCRIBE CORNER LOCATION RELATIVE TO NEAR-BY FEATURES, ALSO HOW TO REACH CORNER

PLANE COORDINATE POSITION DATA

State \_\_\_\_\_ Zone \_\_\_\_\_  
 X \_\_\_\_\_  
 Y \_\_\_\_\_  
 Estab. By \_\_\_\_\_  
 Agency

Signature

Title

Division

Headquarters

Date

7100-52-(3/68)

CORNER RECORD (PERPETUATION)

MONUMENT : DESCRIBE NEW MONUMENT SET, OR WORK DONE TO PRESERVE EXISTING MONUMENT

9

ACCESSORIES : DESCRIBE NEW BT'S WITNESS OBJECTS ETC. ESTABLISHED, OR WORK DONE TO PRESERVE EXISTING EVIDENCE

10

Work Done By \_\_\_\_\_ Title \_\_\_\_\_ Date \_\_\_\_\_ State Registration No. or Agency \_\_\_\_\_

Certified Cor. Record Prepared ? Yes No Filed At: \_\_\_\_\_ Date \_\_\_\_\_

11

REMARKS

Index File No.

T.

R.

M.

Tract or Surv. No.

Cor.

R-21

12

13

**U. S. Department of Agriculture**  
FOREST SERVICE

Reschates NATIONAL FOREST

## CORNERS OF THE PUBLIC SURVEY

T. 22S R. 13E Willamette Mer.

Section 11 Corner common to Sections  
23, 24, 25, and 26

Corner consists of a stake (not) in place

State condition Assumed

Dimensions above ground \_\_\_\_\_ inches

Sketch grooves, letters, figures, or notches, on proper face or edge.

CARDINAL POSITION

N	W	S	E	NW	SW

DIAGONAL POSITION

Mound of \_\_\_\_\_ is located \_\_\_\_\_

Pits are located \_\_\_\_\_

Sketch markings of Bearing Trees (or Rocks) in proper box and fill blanks below, giving bearings from Corner to Trees and Distances in Links.

5	5cc		
25	note		

Species L.P.

Diameter 8.4" 35.4"

Bearing S54°E N12°W

Distance 46.9' 38'

Do you believe this to be a genuine Land Office Corner? Yes

If not, why? \_\_\_\_\_

(Signature)

Charley M. Beal

(Title)

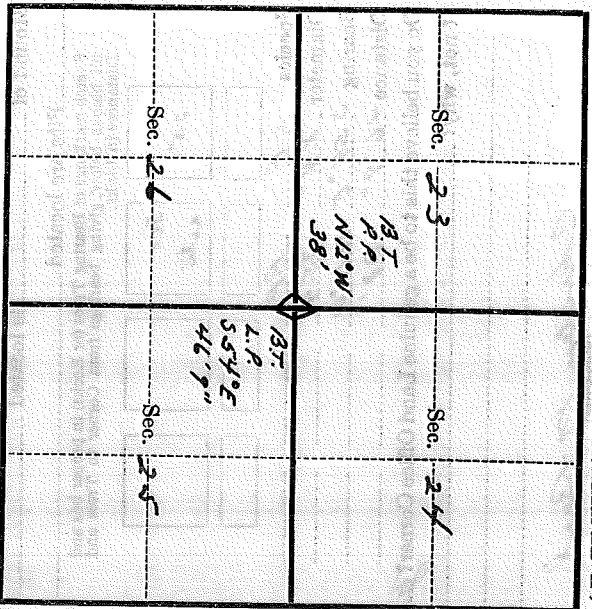
Forester

Oct. 1, 1952

(Date)

T. 225 R. 13E 24 Mer.

(Make sketch of topography near Corner and show section line markers thus "X")



Metal Location Poster is on a ponderosa pine  
tree 35.4 inches diameter, on the south  
side of tree from which

this Corner bears S12° E 38 1/4 chains  
(Bearing) (Distance)

Section line marker between Secs. 23 and 26 is on  
a tree on the Red Bluff Red 220  
(Tree, post, etc.) (Name of road, trail, etc.)

located 67 chains W 1/2 from Sec. 137; 1/2 chain  
(Cross out inapplicable)

Give any further facts needed to find Corner again:

Plotted over too much to read,  
only a little of the readings can be  
seen; portion marked 37. Post stands by  
the 6.4 mile loggway in road  
and down.

Index  
File No. \_\_\_\_\_  
T 225 R. 13 E  
Merid. Will

CORNER RECORD (SEARCH)

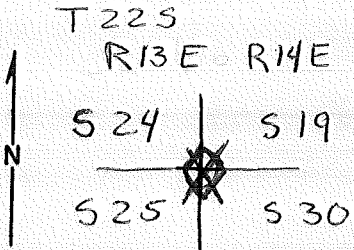
(Ref. FSM 7151.4)

Tract or  
Survey No. \_\_\_\_\_

Cor.  
No. R-25

R.D. Ft. Rock County Deschutes  
N.F. Deschutes State Oregon

CORNER DIAGRAM



DESCRIBE CORNER MONUMENT FOUND

DESCRIBE BEARING TREES OR OTHER OFFICIAL ACCESSORIES FOUND

NE Bearing TREE - Good Condition  
USFS BT tag

PHOTO IDENTIFICATION DATA

Photo No. GS-VDOH  
Filed At. Menlo Park, CA  
Object Ident. \_\_\_\_\_  
Ident. By J.N. Tennant  
S/?? Signature

Line 2, Exposure 1691

DESCRIBE CORNER LOCATION RELATIVE TO NEAR-BY FEATURES, ALSO HOW TO REACH CORNER

PLANE COORDINATE POSITION DATA

State \_\_\_\_\_ Zone \_\_\_\_\_  
X \_\_\_\_\_  
Y \_\_\_\_\_  
Estab. By \_\_\_\_\_  
Agency

Signature

Title

Division

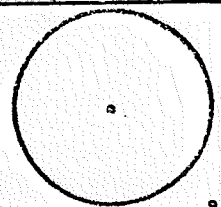
Headquarters

Date

7100-52 (3 68)

CORNER RECORD (PERPETUATION)

MONUMENT  
STAMPED:



MONUMENT: DESCRIBE NEW MONUMENT SET, OR WORK DONE TO PRESERVE EXISTING MONUMENT

9

ACCESSORIES : DESCRIBE NEW BT'S WITNESS OBJECTS ETC. ESTABLISHED, OR WORK DONE TO PRESERVE EXISTING EVIDENCE

10

Work Done By \_\_\_\_\_ Title \_\_\_\_\_ Date \_\_\_\_\_ State Registration No. or Agency \_\_\_\_\_

Certified Cor. Record Prepared ? Yes No Filed At: \_\_\_\_\_ Date \_\_\_\_\_

11

REMARKS

12

Index File No. T. R. M. Tract or Surv. No. Cor.

R-25<sup>13</sup>

## Section Line Marker Record

Box Butte #2228C Road or Trail Fort Rock District

Sec. Line between 26 & 27 T. 22 S. R. 13 E.

Sec. Cor. 676 Ft. S  
¼ or Sec. feet N. S. E. or W.

Posted on N side R  
N. S. E. or W. R. or T.

Posted 6/26/57 By K.H.T.  
Date

(Approx. \_\_\_\_\_)

Cor. Found (Exact. X \_\_\_\_\_)

(Paced X \_\_\_\_\_)

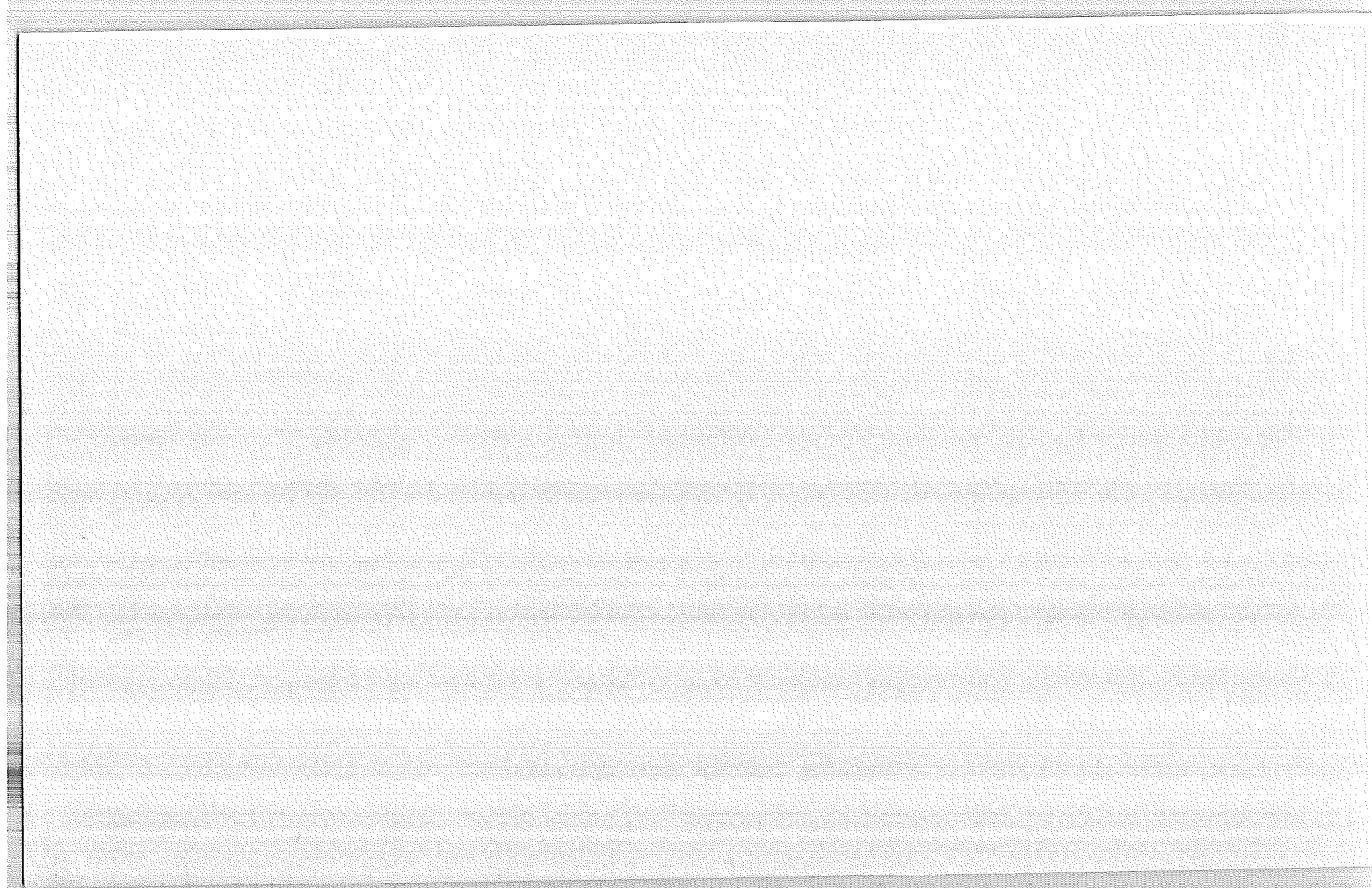
Distance (Chained \_\_\_\_\_)

6	5	4	3	2	1
7	8	9	10	11	12
18	17	16	15	14	13
19	20	21	22	23	24
30	29	28	27	26	25
31	32	33	34	35	36

Indicate position of marker by  
 red X

If marker is on Twp. or Rge. line, reference TWP. NORTH or Rge. EAST of that line.

Also 926' N,





Index

File No. 2171

CORNER RECORD (SEARCH) Contract or

(Ref. FSM 7151.4)

Survey No. 3011

Cor.

No. V-21

T 22 S. R. 13 E.

R.D. Ft. Rock

County Deschutes

NW Cor. of

Merid. Willamette

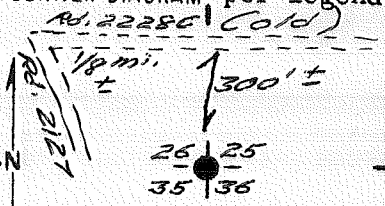
N.F. Deschutes

State Oregon

Section 35

CORNER DIAGRAM, per Legend

DESCRIBE CORNER MONUMENT FOUND



2 1/2" BCSP rising 1" in

stone collar.

DESCRIBE BEARING TREES OR OTHER OFFICIAL ACCESSORIES FOUND

5" LP N69°E 17 3/4' to 60-D in N base

5" LP 574°E 29 3/4' to 60-D in N base

6" LP 577°W 6 3/4' to 60-D in N base

7" LP N44°W 22 3/4' Dead

PHOTO IDENTIFICATION DATA

Photo No. \_\_\_\_\_

Filed At. \_\_\_\_\_

Object Ident. \_\_\_\_\_

Ident. By \_\_\_\_\_

Signature

DESCRIBE CORNER LOCATION RELATIVE TO NEAR-BY FEATURES, ALSO HOW TO REACH CORNER

From junction of Rds. 2127 & 2228C; West  
on 2228C 1/8 mi. E. Corner is South of  
road 300'±.

CORNER LEGEND:

FS or Unverified  
Contr. Other

Searched For/Not Found

Evidence Found/Accept.:

Permanent Mon. Set/Pd.

Searched By:

Title

Division

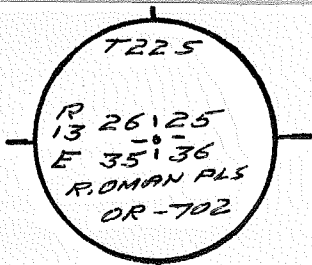
Headquarters

Date

CORNER RECORD (PERPETUATION)

MONUMENT: DESCRIBE NEW MONUMENT SET, OR WORK DONE TO PRESERVE EXISTING MONUMENT

MONUMENT STAMPED



ACCESSORIES DESCRIBE NEW BT'S WITNESS OBJECTS ETC. ESTABLISHED, OR WORK DONE TO PRESERVE EXISTING EVIDENCE

*New BT.*

*8" LP Bts. N61°W 23' 3" to 60-D in NE base MKD. T225R13E526 BT.*

*Set 60-D spks. with brass discs MKD. 15-1020 in all live BT's &*

*Painted red bands above BT tags on all live (East, & New)*

*BT's. Line posted South and East from corner.*

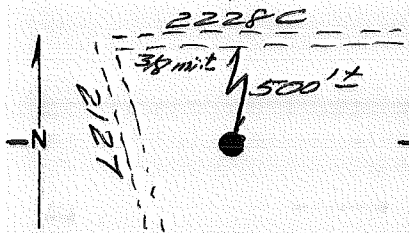
Work Done By *J. L. ...* Title *LS* Date *5/85* State Registration No. *OR-1020*  
or Agency

Plat of *...* Certified Cor. Record Prepared? Yes  No  Filed At *Lake Co., Surveyor's Office* Date *1985*

History of Surveys, G.L.O., etc. *R. Omar 1979.*  
*See new 5/20/96 Cert*

Index  
 File No. 2271 CORNER RECORD (SEARCH) Contract or  
 (Ref. FSM 7151.4) Survey No. 3011 Cor. No. V-22  
 T 22 S. R. 13 E. R.D. Ft. Rock County Deschutes W<sup>1/4</sup> Cor. of  
 Merid. Willamette N.F. Deschutes State Oregon Section 25-36

CORNER DIAGRAM, per Legend



DESCRIBE CORNER MONUMENT FOUND  
2 1/2" BCSP Brs.

587°45'21"E 82.57' --- Stamped  
"AM" on BC.

DESCRIBE BEARING TREES OR OTHER OFFICIAL ACCESSORIES FOUND

2 BTs referencing "AM" --- defaced  
said BTs.

PHOTO IDENTIFICATION DATA

Photo No. \_\_\_\_\_  
 Filed At: \_\_\_\_\_  
 Object Ident. \_\_\_\_\_  
 Ident. By \_\_\_\_\_  
 Signature \_\_\_\_\_

DESCRIBE CORNER LOCATION RELATIVE TO NEAR-BY FEATURES, ALSO HOW TO REACH CORNER

From Rd. 2127; East on 2228C 3/8 mile ±  
thence South 500'± to corner.

CORNER LEGEND:

- FS or Unverified
- Contr. Other
- ◇ Searched For/Not Found
- ⊗ ⊗ Evidence Found/Accept.
- ◆ Permanent Mon. Set/Pd.

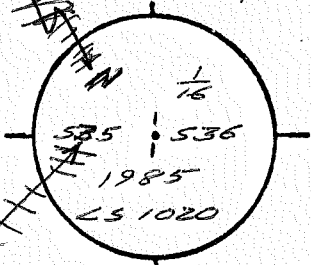
Searched By: \_\_\_\_\_ Title \_\_\_\_\_ Division \_\_\_\_\_ Headquarters \_\_\_\_\_ Date \_\_\_\_\_

CORNER RECORD (PERPETUATION)

MONUMENT. DESCRIBE NEW MONUMENT SET, OR WORK DONE TO PRESERVE EXISTING MONUMENT

Set 2 1/2" x 30" BCSP rising 4". No stones available.

MONUMENT STAMPED



ACCESSORIES DESCRIBE NEW BT'S WITNESS OBJECTS ETC. ESTABLISHED, OR WORK DONE TO PRESERVE EXISTING EVIDENCE

5" LP Bcs. S 11 1/2° W 9' 5" to 60-D in E base, MKD. W 1/16 5 36 BT,  
 6" LP Bcs. N 89° W 32' 3" to 60-D in S base, MKD. W 1/16 5 25 BT,

Work Done By J. Colvin Title LS Date 5/85 State Registration No. OR-1020  
 or Agency  
 Flat or Cor Record Prepared? Yes  No Filed DeWitt Co. Surveyor's Office Date 1985

History of Surveys, G.L.O., etc. R. Oman - 1979

Index File No. 2271 T 22 S., R. 13 E., W.M. Contract or Surv. No. 3011 Cor. V-22

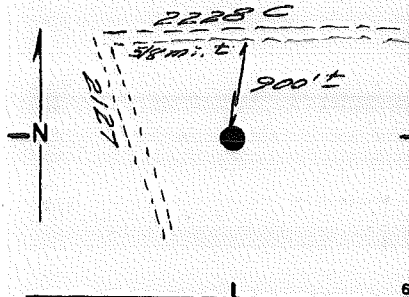
Index  
File No. 2371

CORNER RECORD (SEARCH) Contract or  
(Ref. FSM 7151.4) Survey No. 3011

Cor.  
No. V-23

T 22 S. R. 13 E. R.D. Ft. Rock County Deschutes 1/4 Cor. of  
Merid. Willamette N.F. Deschutes State Oregon Section 25-36

CORNER DIAGRAM, per legend



DESCRIBE CORNER MONUMENT FOUND

2 1/2" BCSP Brs. 586°52'40"E  
54.60'. Stamped "AM" on BC. No original  
evidence found at true corner location.

DESCRIBE BEARING TREES OR OTHER OFFICIAL ACCESSORIES FOUND

2 BTs referencing "AM" --- defaced said  
BTs. No original BTs found.

PHOTO IDENTIFICATION DATA

Photo No. \_\_\_\_\_  
Filed At. \_\_\_\_\_  
Object Ident. \_\_\_\_\_  
Ident. By \_\_\_\_\_  
Signature \_\_\_\_\_

DESCRIBE CORNER LOCATION RELATIVE TO NEAR-BY FEATURES, ALSO HOW TO REACH CORNER

From Rd. 2127; East on 2228C 5/8 mi. ±;  
thence South 900't to corner. Corner  
lies 150't South of rocky Ponderosa Pine  
Road 90't East of old skid trail.

CORNER LEGEND:

- FS or Unverified
- Contr. Other
- Searched For/Not Found
- Evidence Found/Accept.
- Permanent Mon. Set/Fd.

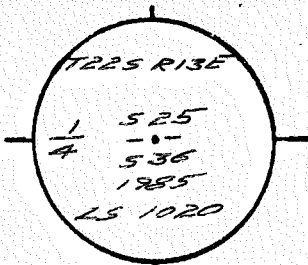
Searched By: J. Cohen Title LS Division Headquarters Date 5/85

CORNER RECORD (PERPETUATION)

MONUMENT. DESCRIBE NEW MONUMENT SET, OR WORK DONE TO PRESERVE EXISTING MONUMENT

Set 2 1/2" x 30" BCSP rising 8" in stone mound.

MONUMENT STAMPED



ACCESSORIES DESCRIBE NEW BT'S WITNESS OBJECTS ETC. ESTABLISHED, OR WORK DONE TO PRESERVE EXISTING EVIDENCE

5" LP BR. N 24° E 23' to 60-D in SE base, MKD. 1/4 525 BT

5" LP BR. S 53 1/2° E 24' to 60-D in SW base, MKD. 1/4 536 BT

Work Done By J. Collins Title LS Date 5/85 State Registration No. or Agency OR-1020

Flat or Cor Record Prepared? Yes  No  Filed At DeWides Co. Surveyor's Office Date 1985

History of Surveys, G.L.O., etc. R. Oman - 1979  
See new 5/20/96 Cert

Index File No 2371 T.22S., R.13E., W.M. Contract or Surv. No 3011 Cor V-23

USDA-FOREST SERVICE D-7100-52(2/82)

Index File No. 2571

CORNER RECORD (SEARCH) Contract or

(Ref. FSM 7151.4)

Survey No. 3011

Cor. No. V-25

T 22 S. R. 13 E.

R.D. Ft. Rock

County Deschutes

NE Cor. of

Merid. Willamette

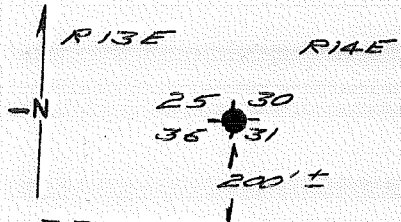
N.F. Deschutes

State Oregon

Section 36

CORNER DIAGRAM, per Legend

DESCRIBE CORNER MONUMENT FOUND



2 1/2" BCSP rising 12" in stone mound

DESCRIBE BEARING TREES OR OTHER OFFICIAL ACCESSORIES FOUND

30" PP Brs. N45°E 27 5' to 60-D in SE base.

10" PP Brs. N89°E 54' to 60-D in SE base.

11" LP Brs. S28°E 28 1/2' Dead

8" LP Brs. S05°W 34 3/4' Dead

DESCRIBE CORNER LOCATION RELATIVE TO NEAR-BY FEATURES, ALSO HOW TO REACH CORNER

From junction of Rds. 2230 E & 2228C; West an 2228C 1/2 mi.±; thence North 200'± to corner.

PHOTO IDENTIFICATION DATA

Photo No. \_\_\_\_\_  
Filed At. \_\_\_\_\_  
Object Ident. \_\_\_\_\_  
Ident. By \_\_\_\_\_  
Signature \_\_\_\_\_

CORNER LEGEND:

- FS or Unverified
- Contr. Other
- Searched For/Not Found
- ◇ Searched For/Not Found
- ⊗ Evidence Found/Accept.
- ⊗ Evidence Found/Accept.
- Permanent Mon. Set/Fd.
- ◆ Permanent Mon. Set/Fd.

Searched By:

Title

Division

Headquarters

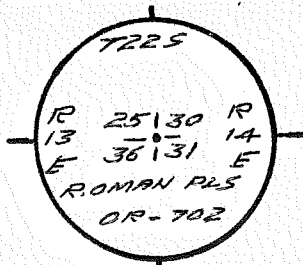
Date

CORNER RECORD (PERPETUATION)

MONUMENT. DESCRIBE NEW MONUMENT SET, OR WORK DONE TO PRESERVE EXISTING MONUMENT

\_\_\_\_\_  
 \_\_\_\_\_  
 \_\_\_\_\_

MONUMENT STAMPED



9

ACCESSORIES. DESCRIBE NEW BT'S WITNESS OBJECTS ETC. ESTABLISHED, OR WORK DONE TO PRESERVE EXISTING EVIDENCE

10" PP Brs.  $S65^{\circ}12'E$   $95^{\circ}9'$  to 60-D in NE base mkd. T 225 R 14 E S 31 BT.  
 4" PP Brs.  $S0^{\circ}12'W$   $34^{\circ}6'$  to 60-D in W base mkd. X BT  
 5/8" x 30" SR with 1/4" Alum. Cap mkd. "RM 525 1985 LS 1020" Brs.  $N51^{\circ}W$   $13^{\circ}4'$   
 Place signs 54-3, 54-4 on all live BTs, set 60-D signs on all live BTs & painted  
 red bands above signs 54-3.

10

Work Done By J. Collins Title LS Date 5/85 State Registration No. or Agency OR-1020  
 (Plat) or Cor. Record Prepared? Yes  No  Filed At Deschutes Lake Co. Surveyor's Office Date 1985

11

History of Surveys, G.L.O., etc. R. Oman, 1979.  
 \_\_\_\_\_  
 \_\_\_\_\_

Index File No 2571 T. 22 S., R. 13 E., W.M. Contract or Surv. No. 3011 Cor. V-25

12

13



USDA-FOREST SERVICE D-7100-52(2/82)

Index  
File No. 2172

CORNER RECORD (SEARCH) Contract or

(Ref. FSM 7151.4)

Survey No. 3011

Cor. No. W-21

T 22 S. R. 13 E.

R.D. Fl. Rock

County Deschutes

Section N 1/16 Cor. of 35-36

Merid. Willamette

N.F. Deschutes

State Oregon

CORNER DIAGRAM, per legend

DESCRIBE CORNER MONUMENT FOUND

2 1/2" BCSP rising 5" in stone mound.

DESCRIBE BEARING TREES OR OTHER OFFICIAL ACCESSORIES FOUND

4" PP Brs. N66°E 21' to 60-D in NW base.  
6" PP Brs. S40°E 15' --- Dead

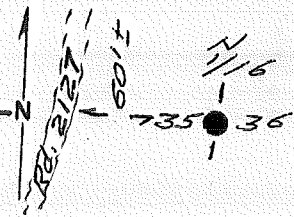


PHOTO IDENTIFICATION DATA

Photo No. \_\_\_\_\_  
Filed At. \_\_\_\_\_  
Object Ident. \_\_\_\_\_  
Ident. By \_\_\_\_\_

Signature

DESCRIBE CORNER LOCATION RELATIVE TO NEAR-BY FEATURES, ALSO HOW TO REACH CORNER

From 2228C, South on 2127 0.3 mi. + then  
East 60' to corner.

CORNER LEGEND:

- FS or Unverified
- Contr. Other
- Searched For/Not Found
- Evidence Found/Accept.
- Permanent Mon. Set/Fd.

Searched By:

Title

Division

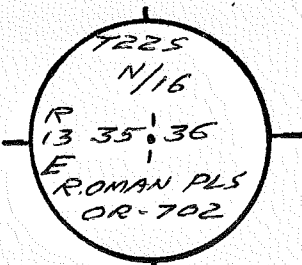
Headquarters

Date

CORNER RECORD (PERPETUATION)

MONUMENT. DESCRIBE NEW MONUMENT SET, OR WORK DONE TO PRESERVE EXISTING MONUMENT

MONUMENT STAMPED



9

ACCESSORIES. DESCRIBE NEW BT'S WITNESS OBJECTS ETC. ESTABLISHED, OR WORK DONE TO PRESERVE EXISTING EVIDENCE

5" LP Bts. N 2° W 22' 4" to 60-D in W base, mtd. N 1/16 535 BT.  
 Placed signs 54-3, 54-9 on new BT. Painted red bands above  
 54-3 on all live (exist. & new) BT's.

10

Work Done By J. P. [Signature] Title LS Date 5/85 State Registration No. or Agency OR-1020  
 Certified  Cor. Record Prepared? Yes No Filed At \_\_\_\_\_ Co. Surveyor's Office Date \_\_\_\_\_

11

History of Surveys, G.L.O., etc. R. Oman - 1979  
See new 5/96 cert

12

Index File No. 2172 T. 22 S., R. 13 E., W.M. Contract or Surv. No. 3011 Cor. W-21

13

USDA-FOREST SERVICE D-7100-52(2/82)

Index

File No. W-22 2272

CORNER RECORD (SEARCH) Contract or

(Ref. FSM 7151.4)

Survey No. 3011

Cor. W-22

T 22 S. R. 13 E.

R.D. H. Rock

County Deschutes

No. 2272

Merid. Willamette

N.F. Deschutes

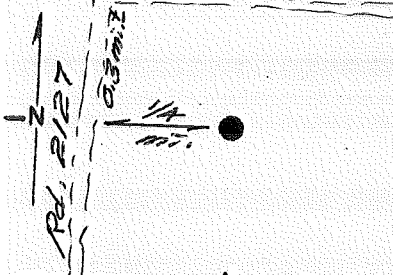
State Oregon

Section 36

Section 36

CORNER DIAGRAM, per legend

DESCRIBE CORNER MONUMENT FOUND



DESCRIBE CORNER MONUMENT FOUND

DESCRIBE BEARING TREES OR OTHER OFFICIAL ACCESSORIES FOUND

PHOTO IDENTIFICATION DATA

Photo No. \_\_\_\_\_  
 Filed At. \_\_\_\_\_  
 Object Ident. \_\_\_\_\_  
 Ident. By \_\_\_\_\_

DESCRIBE CORNER LOCATION RELATIVE TO NEAR-BY FEATURES, ALSO HOW TO REACH CORNER

From Rd. 2228C; South on 2127 <sup>0.4</sup> mi. E;  
thence East on posted line 1/4 mi. to  
corner.

CORNER LEGEND:

- |                                     |                                     |                        |  |
|-------------------------------------|-------------------------------------|------------------------|--|
| FS or                               | Unverified                          |                        |  |
| Contr.                              | Other                               |                        |  |
| <input type="radio"/>               | <input type="checkbox"/>            | Searched For/Not Found |  |
| <input checked="" type="checkbox"/> | <input checked="" type="checkbox"/> | Evidence Found/Accept. |  |
| <input checked="" type="radio"/>    | <input checked="" type="checkbox"/> | Permanent Mon. Set/Fd. |  |

Searched By:

Title

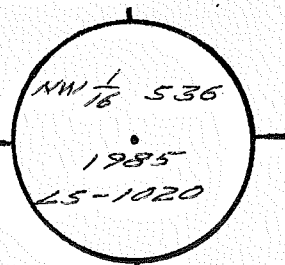
Division

Headquarters

Date

CORNER RECORD (PERPETUATION)

MONUMENT STAMPED



9

MONUMENT. DESCRIBE NEW MONUMENT SET, OR WORK DONE TO PRESERVE EXISTING MONUMENT

Set 2 1/2" x 30" BCSP rising 4". No  
stones available. 3 1/4" Brass cap.

ACCESSORIES : DESCRIBE NEW BT'S WITNESS OBJECTS ETC. ESTABLISHED, OR WORK DONE TO PRESERVE EXISTING EVIDENCE

5" LP Bts. N 63 1/2° E 14' 0" to 60-D in SE base, MKD. NW 1/16 536 BT.  
7" LP Bts. N 29° W 20' 0" to 60-D in NE base, MKD. NW 1/16 536 BT.  
Placed signs 54-3, 54-9 on Bts & painted red bands  
above 54-3.

10

Work Done By J. Collins Title LS Date 5/85 State Registration No. OR-1020  
or Agency  
Plat or Certificate No. 2272 For Record Prepared? Yes  No  Filed At Lane Co. Surveyor's Office Date 1985

11

History  
of  
Surveys,  
G.L.O.,  
etc.

See new 5/20/96 Cert.

12

Index File No. 2272 T. 22 S., R. 13 E., W.M. Contract or Surv. No. 3011 Cor. W-22

13

USDA-FOREST SERVICE D-7100-52(2/82)

Index  
File No. 2373

CORNER RECORD (SEARCH) Contract or

(Ref. FSM 7151.4)

Survey No. 3011

Cor. No. X-23

T 22 S. R. 13 E. R.D. Ft. Rock

County Deschutes

Cor. of C 1/4

Merid. Willamette

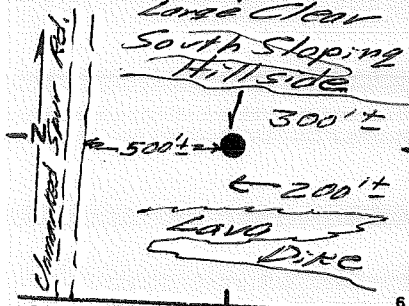
N.F. Deschutes

State Oregon

Section 36

CORNER DIAGRAM, per legend

DESCRIBE CORNER MONUMENT FOUND



DESCRIBE BEARING TREES OR OTHER OFFICIAL ACCESSORIES FOUND

PHOTO IDENTIFICATION DATA

Photo No. \_\_\_\_\_  
Filed At. \_\_\_\_\_  
Object Ident. \_\_\_\_\_  
Ident. By \_\_\_\_\_

DESCRIBE CORNER LOCATION RELATIVE TO NEAR-BY FEATURES, ALSO HOW TO REACH CORNER

CORNER LEGEND:

- FS or Unverified
- Contr. Other
- Searched For/Not Found
- ◇ Searched For/Not Found
- ⊗ Evidence Found/Accept.
- ⊗ Evidence Found/Accept.
- Permanent Mon. Set/Fd.
- ◆ Permanent Mon. Set/Fd.

Corner is 500'± East of unchartered spur Rd.; 300'± South of large - Clear South sloping hillside (crossing E-W) and 200'± North of E-W Lava Dike. From Rd. 2127; North on Rd. 2230 0.35 mi. thence North 185' to corner.

Searched By:

Title

Division

Headquarters

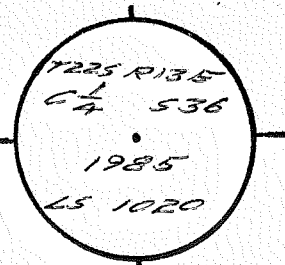
Date

CORNER RECORD (PERPETUATION)

MONUMENT. DESCRIBE NEW MONUMENT SET, OR WORK DONE TO PRESERVE EXISTING MONUMENT

Set 2 1/2" x 30" BCSP rising 2", No stones available. 3/4" Brass caps

MONUMENT STAMPED



ACCESSORIES DESCRIBE NEW BT'S WITNESS OBJECTS ETC. ESTABLISHED, OR WORK DONE TO PRESERVE EXISTING EVIDENCE

3" PP Brs. N 74° E 22' 8" to 60-D in S base, mkd. X BT.  
 5" PP Brs. S 18° E 14' 1" to 60-D in W base, mkd. C 1/4 536 BT.  
 Placed signs 54-3, 54-9 on BT's and painted red bands above 54-3.

10

Work Done By John Title LS Date 5/85 State Registration No. or Agency OR-1020  
 Plat or Certified Cor. Record Prepared? Yes  No  Filed At Deschutes Lake Co. Surveyor's Office Date 1985

11

History of Surveys, G.L.O., etc.

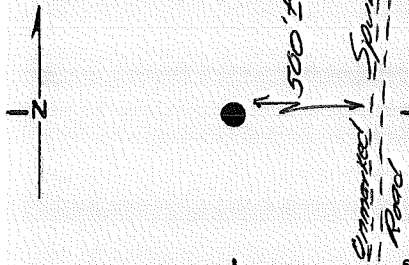
12

Index File No. 2373 T.22 S., R.13 E., W.M. Contract or Surv. No. 3011 Cor. X-23

13

Index File No: 2173 CORNER RECORD (SEARCH) Contract or Survey No. 3011 Cor. No. X-21  
 (Ref. FSM 7151.4)  
 T 22 S. R. 13 E. R.D. Fr. Rock County Deschutes 1/4 Cor. of  
 Merid. Willamette N.F. Deschutes State Oregon Section 35-35

CORNER DIAGRAM, per legend



DESCRIBE CORNER MONUMENT FOUND

2 1/2" GLSP Brs. 511°15'40"W  
10.00'. Stamped "AM" on BC. No original  
evidence found.

DESCRIBE BEARING TREES OR OTHER OFFICIAL ACCESSORIES FOUND

2 BTs @ "AM" --- Salvaged BTs and  
referenced to true position. No original  
BTs found.

PHOTO IDENTIFICATION DATA

Photo No. \_\_\_\_\_  
 Filed At. \_\_\_\_\_  
 Object Ident. \_\_\_\_\_  
 Ident. By \_\_\_\_\_  
 Signature \_\_\_\_\_

DESCRIBE CORNER LOCATION RELATIVE TO NEAR-BY FEATURES, ALSO HOW TO REACH CORNER

Corner from Rd. 2228C; South on Rd. 2127  
0.6  
mi.; thence South on unmarked spur Rd.  
0.1 mi.; thence West 500'± to Corner.

CORNER LEGEND:

- FS or Unverified
- Contr. Other
- Searched For/Not Found
- ◇ Searched For/Not Found
- ⊗ Evidence Found/Accept.
- ⊗ Evidence Found/Accept.
- Permanent Mon. Set/Yd.
- ◆ Permanent Mon. Set/Yd.

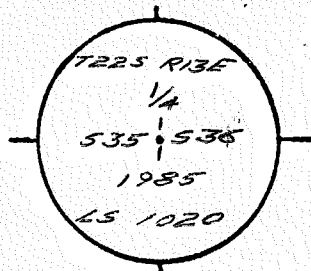
Searched By: J. [Signature] Title LS Division Headquarters Date 5/85

CORNER RECORD (PERPETUATION)

MONUMENT. DESCRIBE NEW MONUMENT SET, OR WORK DONE TO PRESERVE EXISTING MONUMENT

Set 2 1/2" x 30" BCSP rising 6" in stone mound.

MONUMENT STAMPED



ACCESSORIES DESCRIBE NEW BT'S WITNESS OBJECTS ETC. ESTABLISHED, OR WORK DONE TO PRESERVE EXISTING EVIDENCE

6" PP Bts. N77°E 16" to 60-D in N base, mkd. 536 1/4 BT.  
 7" PP Bts. S66°W 29" to 60-D in S base, mkd. 535 1/4 BT.

Work Done By [Signature] Title LS Date 5/85 State Registration No. or Agency OR-1020

Flat of Cor Record Prepared? Yes  No Filed At DeWittes Co. Surveyor's Office Date 1985

History of Surveys, G.L.O., etc. R. Oman - 1979

Index File No. 2173 T. 22 S., R. 13 E., W.M. Contract or Surv. No. 3011 Cor. X-21



USDA-FOREST SERVICE

Index File No. 2573

CORNER RECORD (SEARCH)  
(Ref. FSM 7.151.4)

Tract or Survey No. \_\_\_\_\_

Cor. No. X-25

T. 22 S. R. 13 E. R.D. FR. ROCK County DESCHUTES

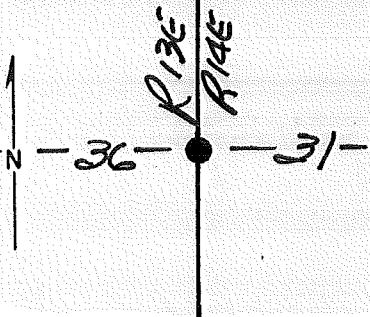
E/4 COR. of SEC. 36

Merid. WILLAMETTE N.F. DESCHUTES State OREGON

W/4 COR. of SEC. 31

CORNER DIAGRAM PER LEGEND

DESCRIBE CORNER MONUMENT FOUND



~ NONE ~

DESCRIBE BEARING TREES OR OTHER OFFICIAL ACCESSORIES FOUND

29" P. PINE w/ SCRIBING in Sec 36

Dead & Down Pine Shard w/ Faint Marks in Sec 31

PHOTO IDENTIFICATION DATA

Photo No. \_\_\_\_\_

Filed At. \_\_\_\_\_

Object Ident. \_\_\_\_\_

Ident. By \_\_\_\_\_

Signature

Corner Legend:

Searched for/Not Found

Evidence Found/Accept

Permanent Monument

Signature R. OMAN

Title PLS

Division \_\_\_\_\_

Headquarters SO

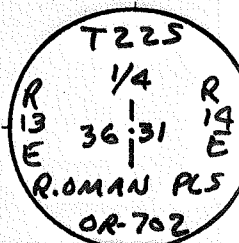
Date 5/79 D-7100-52 (3/79)

CORNER RECORD (PERPETUATION)

MONUMENT. DESCRIBE NEW MONUMENT SET, OR WORK DONE TO PRESERVE EXISTING MONUMENT

SET 2 1/2" X 32" BRASS-CAPPED STEEL PIPE RISING 2"  
 in a mound of stones on east facing slope  
 about "HALFWAY" UP SMALL HILL.

MONUMENT SET



ACCESSORIES DESCRIBE NEW BT'S WITNESS OBJECTS ETC. ESTABLISHED, OR WORK DONE TO PRESERVE EXISTING EVIDENCE

24" P. PINE S78°W 19 1/2 FT ORIGINAL BT  
 8" P. PINE S76°E 21 1/2 FT. MKD. "T225 R14E S31 BT"

Work Done By R.OMAN Title PLS Date 5/79 State Registration No. OR-702  
 PLAT PREPARED OR Certified Cor. Record Prepared?  Yes No Filed At DESCH. LAKE CO. SURVEYOR'S OFFICE Date 5 June 79

REMARKS

Index File No. 2573 T. 22 S., R. 13 E., W.M. Tract or Surv. No. Cor. X-25

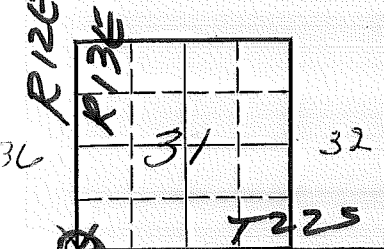
LAND CORNER RECORD

(Rectangular)

Z-01 5680-2

1. T 22S R 13E No. Z-1 Cor. Sec. Mer. Wm. State Oregon N. F. Deschutes Dist. Fort Rock

2. Corner Status



3. Original Description \_\_\_\_\_ Vol. \_\_\_\_\_ Page \_\_\_\_\_ Where Recorded \_\_\_\_\_

4. Description of Corners:

5. Investigation Notes:  
See Z-25 T22S R12E Wm.

*Handwritten signature: Z. P. [unclear]*

7. Photo Identification T235  
Photo No. \_\_\_\_\_  
Ident. By: \_\_\_\_\_

8. Plane Coordinate Position Data  
State \_\_\_\_\_ Zone \_\_\_\_\_  
X \_\_\_\_\_  
Y \_\_\_\_\_  
Estab. By \_\_\_\_\_  
Field Book No. \_\_\_\_\_  
Where Filed \_\_\_\_\_

9. Evaluation  
Authentic \_\_\_\_\_  
Needs Verif. \_\_\_\_\_ Monument \_\_\_\_\_  
Re-estab. \_\_\_\_\_ Survey \_\_\_\_\_  
Land Status \_\_\_\_\_

6. Signed \_\_\_\_\_ Title \_\_\_\_\_ Date \_\_\_\_\_

PERPETUATION RECORD

10. Monument:

11. Accessories

12. Set By \_\_\_\_\_ Title \_\_\_\_\_  
License \_\_\_\_\_ Agency \_\_\_\_\_ Date \_\_\_\_\_

13. Recorded By \_\_\_\_\_ (Agency) \_\_\_\_\_ Volume \_\_\_\_\_ Page \_\_\_\_\_  
(Date) (City) (County) (State)

14. Remarks:

2-01

Index  
File No. Z-5  
T 22S R. 13E  
Merid. Will

CORNER RECORD (SEARCH)

(Ref. FSM 7151.4)

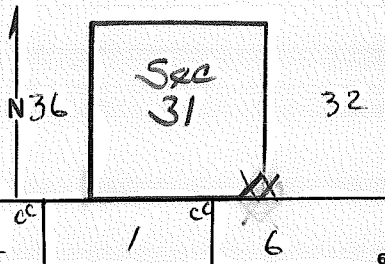
R.D. Fort Rock County Deschutes  
N.F. Deschutes State Ore.

Tract or  
Survey No.

Cor.  
No. Z-5

SE Cor Sec 31 ONLY  
SW Cor Sec 32

CORNER DIAGRAM



DESCRIBE CORNER MONUMENT FOUND

DESCRIBE BEARING TREES OR OTHER OFFICIAL ACCESSORIES FOUND

Dead Treedown - squared on 4 sides,  
U.S.F.S. Tags  
SE. B.T.

DESCRIBE CORNER LOCATION RELATIVE TO NEAR-BY FEATURES, ALSO HOW TO REACH CORNER

PHOTO IDENTIFICATION DATA

Photo No. GS-VDOH  
Filed At. Menlo Park, Ca.  
Object Ident. Sketch  
Ident. By J. N. Tennant USGS  
10/77 Signature

(Line 2 - exposure 269)

PLANE COORDINATE POSITION DATA

State \_\_\_\_\_ Zone \_\_\_\_\_  
X \_\_\_\_\_  
Y \_\_\_\_\_  
Estab. By \_\_\_\_\_  
Agency

Signature

Title

Division

Headquarters

Date

7100-52-(3/68)

### CORNER RECORD (PERPETUATION)

MONUMENT : DESCRIBE NEW MONUMENT SET, OR WORK DONE TO PRESERVE EXISTING MONUMENT

ACCESSORIES : DESCRIBE NEW BT'S WITNESS OBJECTS ETC. ESTABLISHED, OR WORK DONE TO PRESERVE EXISTING EVIDENCE

Work Done By \_\_\_\_\_ Title \_\_\_\_\_ Date \_\_\_\_\_ State Registration No. or Agency \_\_\_\_\_

Certified Cor. Record Prepared ? Yes No Filed At: \_\_\_\_\_ Date \_\_\_\_\_

REMARKS

Index File No. T. R. M. Tract or Surv. No.

Cor. **205** <sup>12</sup>/<sub>13</sub>

USDA-FOREST SERVICE

Index File No. 2175

CORNER RECORD (SEARCH)

Tract or Survey No.

Cor. No. Z-21

T. 22 S. R. 13 E.

(Ref. FSM 7.151.4)

Survey No.

COR. of SEC. 36

Merid. WILLAMETTE

N.F. DESCHUTES

County

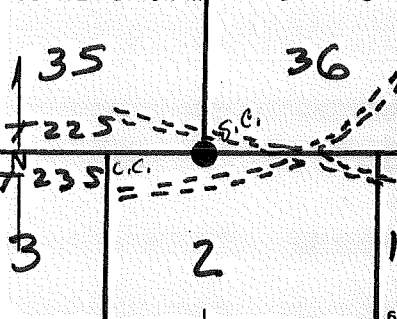
DESCHUTES/LAKE SW

COR. of SEC. 35

State OREGON

SE

CORNER DIAGRAM PER LEGEND



DESCRIBE CORNER MONUMENT FOUND

~ NONE ~

DESCRIBE BEARING TREES OR OTHER OFFICIAL ACCESSORIES FOUND

39" PINE SNAG W/ MKS in Sec 2  
Two 6" L. PINES, DEAD & DOWN & OBVIOUSLY TRANSPORTED.

PHOTO IDENTIFICATION DATA

Photo No. GS-VDOH Ln. 2 EXP. 209  
Filed At. Mendocino Co., CALIF  
Object Ident. BT  
Ident. By JN Tennant USGS  
10/77 Signature

DESCRIBE CORNER LOCATION RELATIVE TO NEAR-BY FEATURES, ALSO HOW TO REACH CORNER

- Corner Legend:
- Searched for/Not Found
  - Evidence Found/Accept.
  - Permanent Monument

Signature R. OMAN

Title PCS

Division

Headquarters SO

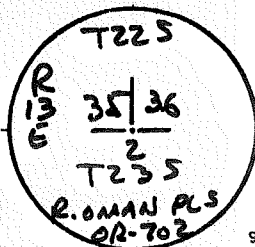
Date 5/79 D-7100-52 (3/79)

CORNER RECORD (PERPETUATION)

MONUMENT. DESCRIBE NEW MONUMENT SET, OR WORK DONE TO PRESERVE EXISTING MONUMENT

SET 2 1/2" X 32" BRASS-CAPPED STEEL PIPE FLUSH  
W/ GROUND, ABOUT 125' WEST OF INTERSECTION  
OF TWO LOGGING SPURS

MONUMENT STAMPED



ACCESSORIES DESCRIBE NEW BT'S WITNESS OBJECTS ETC. ESTABLISHED, OR WORK DONE TO PRESERVE EXISTING EVIDENCE

5" L. PINE BRS. N 28° E 42 ft. MKD "T225 536 BT"  
3" P. PINE BRS. N 14° W 32 ft. " " X BT "  
7" L. PINE BRS. S 33° W 16 ft. " " T235 52 BT "  
3" P. PINE BRS. S 81° E 17 ft. " " X BT "

Work Done By R. OMAN Title PLS Date 5/79 State Registration No. OR-702  
or Agency  
PLAT PREPARED OR Certified Cor Record Prepared  Yes No Filed At DESH/LAKE CO. SURVEYOR'S OFFICE Date 5 June 79

REMARKS

Index File No. 2175 T. 22 S., R. 13 E., W.M.

Tract or Surv. No.

Cor. 2-21



USDA-FOREST SERVICE

Index File No. 2375

CORNER RECORD (SEARCH)

(Ref. FSM 7.151.4)

Tract or

Survey No.

Cor. No. 2-23

T. 22 S. R. 13 E.

R.D. FT. ROCK

County DESCHUTES

5/4 COR. of SEC 36

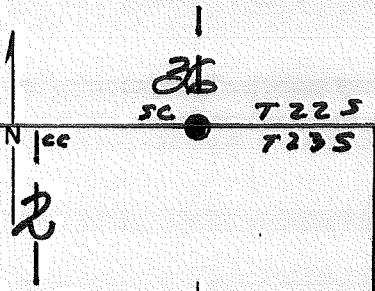
Merid. WILLAMETTE

N.F. DESCHUTES

State OREGON

SC OR SEC

CORNER DIAGRAM PER LEGEND



DESCRIBE CORNER MONUMENT FOUND

NONE

DESCRIBE BEARING TREES OR OTHER OFFICIAL ACCESSORIES FOUND

12" P. PINE in Sec 2, w/ mks.

PHOTO IDENTIFICATION DATA

Photo No. \_\_\_\_\_  
 Filed At. \_\_\_\_\_  
 Object Ident. \_\_\_\_\_  
 Ident. By \_\_\_\_\_  
*Signature*

DESCRIBE CORNER LOCATION RELATIVE TO NEAR-BY FEATURES, ALSO HOW TO REACH CORNER

Corner Legend:

- Searched for/Not Found
- Evidence Found/Accept.
- Permanent Monument

Signature R. OMAN

Title PLS

Division

Headquarters SO

Date 5/79 D-7100-52 (3/79)

CORNER RECORD (PERPETUATION)

MONUMENT. DESCRIBE NEW MONUMENT SET, OR WORK DONE TO PRESERVE EXISTING MONUMENT

SET 2 1/2" X 32" BRASS-CAPPED STEEL PIPE, RISING 4"  
 in MOUND of STONES ON S. EDGE of SKID TRAIL  
 ± 200' N. of LOGGING SPUR

MONUMENT SET/FILED

T225  
 R 1/4  
 13 36  
 E ———  
 2  
 T235  
 ROMAN PCS  
 OR-702

ACCESSORIES DESCRIBE NEW BT'S WITNESS OBJECTS ETC. ESTABLISHED, OR WORK DONE TO PRESERVE EXISTING EVIDENCE

12" P. PINE BRS. S42°W 112ft. ORIGINAL BT  
 8" L. PINE BRS. N24°W 34ft. MKD. "SC 1/4 S36 BT"

Work Done By ROMAN Title PLS Date 5/79 State Registration No. OR-702  
 or Agency  
 PLAT PREPARED OR  
 Certified Cor. Record Prepared?  Yes  No Filed At DESCH/LING Co. SURVEYOR'S OFFICE Date 5 June 79

REMARKS

Index File No. 2375 T. 22 S., R. 13 E., W.M. Tract or Surv. No. Cor. Z-23

USDA-FOREST SERVICE

Index File No. 2575

CORNER RECORD (SEARCH)

(Ref. FSM 7.151.4)

Tract or Survey No.

Cor. No. 2-25

T. 22 S. R. 13 E. R.D. FT. ROCK

County DESCHUTES

State OREGON

Cor. of SEC. 36

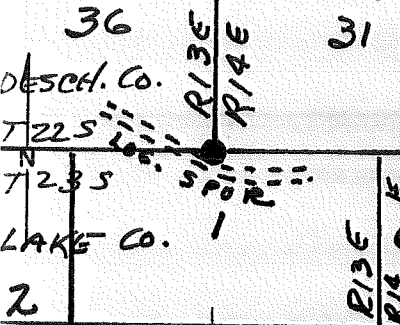
Merid. WILLAMETTE

N.F. DESCHUTES

State OREGON

Cor. of SEC. 31

CORNER DIAGRAM PER LEGEND



DESCRIBE CORNER MONUMENT FOUND

~ NONE ~

DESCRIBE BEARING TREES OR OTHER OFFICIAL ACCESSORIES FOUND

NW ~ 22" X 9" DBL. P. PINE w/ SCRIBING

SE ~ 30" P. PINE w/ SCRIBING

POSSIBLE STUMP SW

POSSIBLE ROOT WELL NE

PHOTO IDENTIFICATION DATA

Photo No. \_\_\_\_\_

Filed At. \_\_\_\_\_

Object Ident. \_\_\_\_\_

Ident. By \_\_\_\_\_

Signature \_\_\_\_\_

DESCRIBE CORNER LOCATION RELATIVE TO NEAR-BY FEATURES, ALSO HOW TO REACH CORNER

Corner Legend:

- Searched for/Not Found
- Evidence Found/Accept.
- Permanent Monument

Signature R. OMAN

Title PLS

Division

Headquarters SO

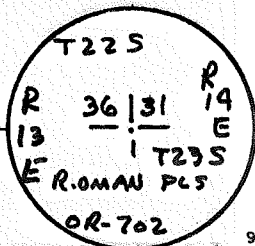
Date 5/79 D-7100-52 (3/79)

CORNER RECORD (PERPETUATION)

MONUMENT DESCRIBE NEW MONUMENT SET, OR WORK DONE TO PRESERVE EXISTING MONUMENT

SET 2 1/2" X 32" BRASS-CAPPED STEEL PIPE RISING 7"  
 IN A MOUND OF STONES  
 ON TOP OF SMALL EARTH MOUND ± 20' NE of  
 LOGGING SPUR

MONUMENT SET/REPAIRED



ACCESSORIES DESCRIBE NEW BT'S WITNESS OBJECTS ETC. ESTABLISHED, OR WORK DONE TO PRESERVE EXISTING EVIDENCE

8" P. PINE BRS. S84°W 72 1/2' MKD. "T235 S1 BT"  
 22" X 9" P. PINE DRS. N24°W 30' ± ORIGINAL BT  
 5" P. PINE BRS. N72°E 84 1/2' MKD. "T225 S31 BT"  
 30" P. PINE BRS. S32°E 27 1/2' ORIGINAL BT

Work Done By R.OMAN Title PCS Date 5/79 State Registration No. OR-702  
 or Agency  
 PLAT PREPARED OR  
 Certified Cor Record Prepared?  Yes No Filed At DESCH. LAKE Co. SURVEYOR'S OFFICE Date 5 June 79

REMARKS

Index File No. 2575 T. 22 S., R. 13 E., W.M.

Tract or Surv. No.

Cor. Z-25

USDA-FOREST SERVICE

Index

File No. \_\_\_\_\_

**CORNER RECORD (SEARCH)**

(Ref. FSM 7151.4)

Tract or  
Survey No. \_\_\_\_\_

Cor.  
No. \_\_\_\_\_

T \_\_\_\_\_ R. \_\_\_\_\_ R.D. \_\_\_\_\_ County \_\_\_\_\_

Merid. \_\_\_\_\_ N.F. \_\_\_\_\_ State \_\_\_\_\_

**CORNER DIAGRAM**

**DESCRIBE CORNER MONUMENT FOUND**



**DESCRIBE BEARING TREES OR OTHER OFFICIAL ACCESSORIES FOUND**

**PHOTO IDENTIFICATION DATA**

Photo No. \_\_\_\_\_

Filed At. \_\_\_\_\_

Object Ident. \_\_\_\_\_

Ident. By \_\_\_\_\_

*Signature*

**PLANE COORDINATE POSITION DATA**

State \_\_\_\_\_ Zone \_\_\_\_\_

X \_\_\_\_\_

Y \_\_\_\_\_

Estab. By \_\_\_\_\_

*Agency*

Signature

Title

Division

Headquarters

Date

FS-7100-52 (3/68)

**CORNER RECORD (PERPETUATION)**

**MONUMENT: DESCRIBE NEW MONUMENT SET, OR WORK DONE TO PRESERVE EXISTING MONUMENT**

**ACCESSORIES : DESCRIBE NEW BT'S WITNESS OBJECTS ETC. ESTABLISHED, OR WORK DONE TO PRESERVE EXISTING EVIDENCE**

9

10

Work Done By \_\_\_\_\_ Title \_\_\_\_\_ Date \_\_\_\_\_ State Registration No. or Agency \_\_\_\_\_

Certified Cor. Record Prepared ? Yes No Filed At: \_\_\_\_\_ Date \_\_\_\_\_

11

**REMARKS**

Index File No. T. R. M. Tract or Surv. No. Cor.

12

13

USDA-FOREST SERVICE

Index  
File No. \_\_\_\_\_

**CORNER RECORD (SEARCH)**  
(Ref. FSM 7151.4)

Tract or  
Survey No. \_\_\_\_\_ Cor.  
No. \_\_\_\_\_

T \_\_\_\_\_ R. \_\_\_\_\_ R.D. \_\_\_\_\_ County \_\_\_\_\_

Merid. \_\_\_\_\_ N.F. \_\_\_\_\_ State \_\_\_\_\_

**CORNER DIAGRAM**

**DESCRIBE CORNER MONUMENT FOUND**



**DESCRIBE BEARING TREES OR OTHER OFFICIAL ACCESSORIES FOUND**

**PHOTO IDENTIFICATION DATA**

Photo No. \_\_\_\_\_

Filed At. \_\_\_\_\_

Object Ident. \_\_\_\_\_

Ident. By \_\_\_\_\_

*Signature*

**PLANE COORDINATE POSITION DATA**

State \_\_\_\_\_ Zone \_\_\_\_\_

X \_\_\_\_\_

Y \_\_\_\_\_

Estab. By \_\_\_\_\_

*Agency*

Signature

Title

Division

Headquarters

Date

FS-7100-52 (3/68)

**CORNER RECORD (PERPETUATION)**

**MONUMENT: DESCRIBE NEW MONUMENT SET, OR WORK DONE TO PRESERVE EXISTING MONUMENT**

**ACCESSORIES : DESCRIBE NEW BT<sup>1/2</sup> WITNESS OBJECTS ETC. ESTABLISHED, OR WORK DONE TO PRESERVE EXISTING EVIDENCE**

10

Work Done By \_\_\_\_\_ Title \_\_\_\_\_ Date \_\_\_\_\_ State Registration No. or Agency \_\_\_\_\_

Certified Cor. Record Prepared ? Yes No Filed At: \_\_\_\_\_ Date \_\_\_\_\_

11

REMARKS

Index File No. T. R. M. Tract or Surv. No. Cor.

12

13



USDA-FOREST SERVICE

Index

File No. \_\_\_\_\_

**CORNER RECORD (SEARCH)**

(Ref. FSM 7151.4)

Tract or  
Survey No. \_\_\_\_\_ Cor.  
No. \_\_\_\_\_

T \_\_\_\_\_ R. \_\_\_\_\_ R.D. \_\_\_\_\_ County \_\_\_\_\_

Merid. \_\_\_\_\_ N.F. \_\_\_\_\_ State \_\_\_\_\_

**CORNER DIAGRAM**

**DESCRIBE CORNER MONUMENT FOUND**



**DESCRIBE BEARING TREES OR OTHER OFFICIAL ACCESSORIES FOUND**

**PHOTO IDENTIFICATION DATA**

Photo No. \_\_\_\_\_

Filed At. \_\_\_\_\_

Object Ident. \_\_\_\_\_

Ident. By \_\_\_\_\_

*Signature*

**PLANE COORDINATE POSITION DATA**

State \_\_\_\_\_ Zone \_\_\_\_\_

X \_\_\_\_\_

Y \_\_\_\_\_

Estab. By \_\_\_\_\_

*Agency*

Signature

Title

Division

Headquarters

Date

FS-7100-52 (3/68)

6

7

8

2

3

4

5

## CORNER RECORD (PERPETUATION)

MONUMENT : DESCRIBE NEW MONUMENT SET, OR WORK DONE TO PRESERVE EXISTING MONUMENT

ACCESSORIES : DESCRIBE NEW BT'S WITNESS OBJECTS ETC. ESTABLISHED, OR WORK DONE TO PRESERVE EXISTING EVIDENCE

9

10

Work Done By \_\_\_\_\_ Title \_\_\_\_\_ Date \_\_\_\_\_ State Registration No. or Agency \_\_\_\_\_

Certified Cor. Record Prepared ? Yes No Filed At: \_\_\_\_\_ Date \_\_\_\_\_

11

REMARKS

12

Index File No. T. R. M. Tract or Surv. No. Cor.

13

USDA-FOREST SERVICE

Index

File No. \_\_\_\_\_

**CORNER RECORD (SEARCH)**

(Ref. FSM 7151.4)

Tract or  
Survey No. \_\_\_\_\_

Cor.  
No. \_\_\_\_\_

T \_\_\_\_\_ R. \_\_\_\_\_ R.D. \_\_\_\_\_ County \_\_\_\_\_

Merid. \_\_\_\_\_ N.F. \_\_\_\_\_ State \_\_\_\_\_

CORNER DIAGRAM

DESCRIBE CORNER MONUMENT FOUND



DESCRIBE BEARING TREES OR OTHER OFFICIAL ACCESSORIES FOUND

PHOTO IDENTIFICATION DATA

Photo No. \_\_\_\_\_

Filed At. \_\_\_\_\_

Object Ident. \_\_\_\_\_

Ident. By \_\_\_\_\_

*Signature*

PLANE COORDINATE POSITION DATA

State \_\_\_\_\_ Zone \_\_\_\_\_

X \_\_\_\_\_

Y \_\_\_\_\_

Estab. By \_\_\_\_\_

*Agency*

Signature

Title

Division

Headquarters

Date

FS-7100-52 (3/68)

## CORNER RECORD (PERPETUATION)

MONUMENT : DESCRIBE NEW MONUMENT SET, OR WORK DONE TO PRESERVE EXISTING MONUMENT

ACCESSORIES : DESCRIBE NEW BT'S WITNESS OBJECTS ETC. ESTABLISHED, OR WORK DONE TO PRESERVE EXISTING EVIDENCE

Work Done By \_\_\_\_\_ Title \_\_\_\_\_ Date \_\_\_\_\_ State Registration No. or Agency \_\_\_\_\_

Certified Cor. Record Prepared ? Yes No Filed At: \_\_\_\_\_ Date \_\_\_\_\_

REMARKS

Index File No. T. R. M. Tract or Surv. No. Cor.